

COMPANY PROFILE



Index

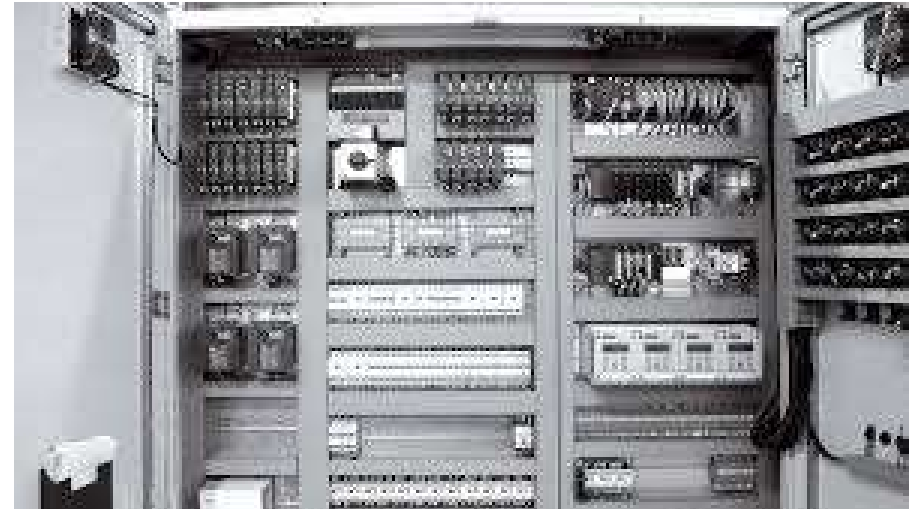
1. History
2. Know how
3. Strategic development
 - 3.1. Light automation
4. Supata[®]
5. Beika[®]
6. Pom[®]
7. Nepo[®]
8. Mobile feeding of product/package
9. Partnership

1. History

Born in Italy, 1961



Industrial automation



Renewable energy



In the mid 90s second generation after international experience

Investment in a new building

- Active building
- Low carbon footprint
- Green inside
- Friendly environment





Branches



Branch
Plastic



Branch Automation
for Mex and USA



Branch
Energy

2. Know how

Investment in higher know-how

- Electrical engineering
- Software engineering (PLC, SCADA, robot, 2D, 3D machine vision, AI)
- Mechanical engineering



TURN-KEY

24/7 After sale

3. Strategic development since 2008

- Modular automation
- Turn-key flexible solutions
- **Light automation**

The ability for a robot or system to be quickly and easily re-tasked to change product design for both low and high mix manufacturing.

When properly utilized, a Light Automation cell can evolve with processes and demand, reduce and fix production costs, improve quality, reduce energy consumption and eliminate health and safety issues.

3.1. Light automation

- Better use of human resources
- Human-Robots cooperation
- Eliminate health and safety issues
- Reduce labor force need
- Reduce space and energy consumption
- Modularity, Movability and Scalability
- Easier setup and high flexibility
- Greater labor productivity and efficiency
- Improve quality
- Increase system reliability
- Affordable: Lower Capex / Pay back

4. Supata®

Smart feeder (r&d 2008-2018)



- Turn-key with 4 technologies: vibration, robot, vision, hmi
- Modular
- Movable
- Reduced footprint
- Ready for new products
- AI to auto-set to new products
- ROI < 2 years



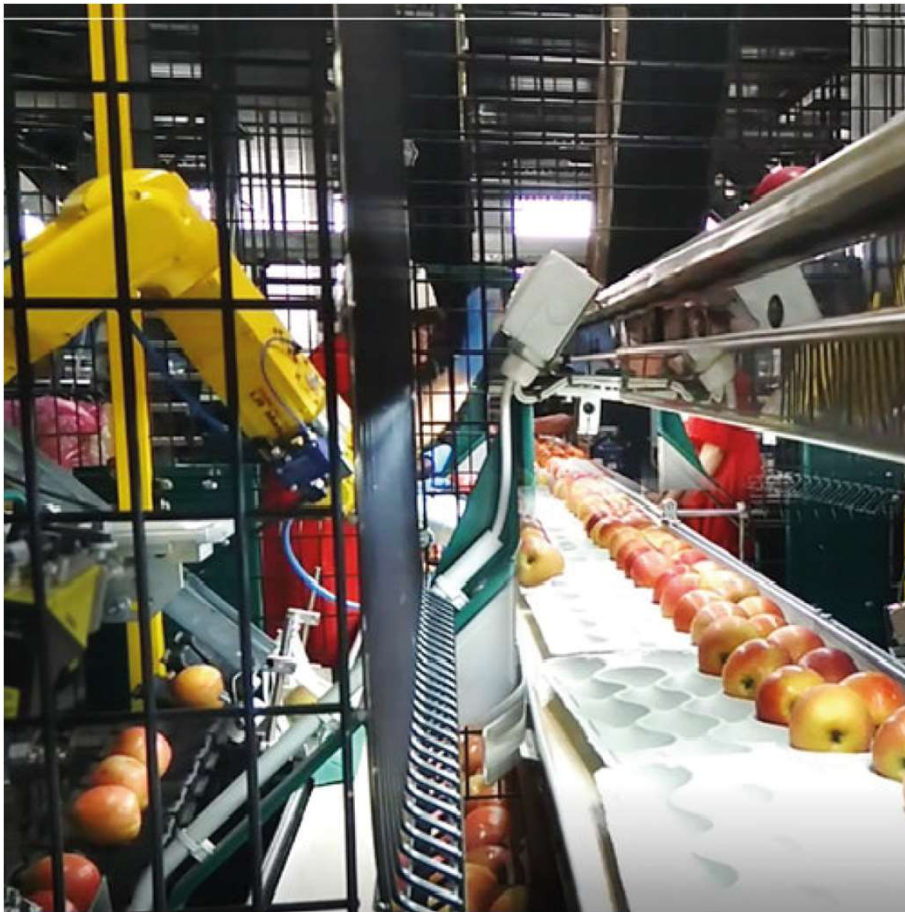
5. Beika®

Visual quality control with AI (foils of metal, plastic, MBF, single products, ...)



6. Pom®

Packaging of apples (fruit, vegetables) - patented



7. Nepo®

Service of beverage



8. Mobile feeding of product/package







Partnership

Light automation for flexible and modular applications

Modular investment in a global design

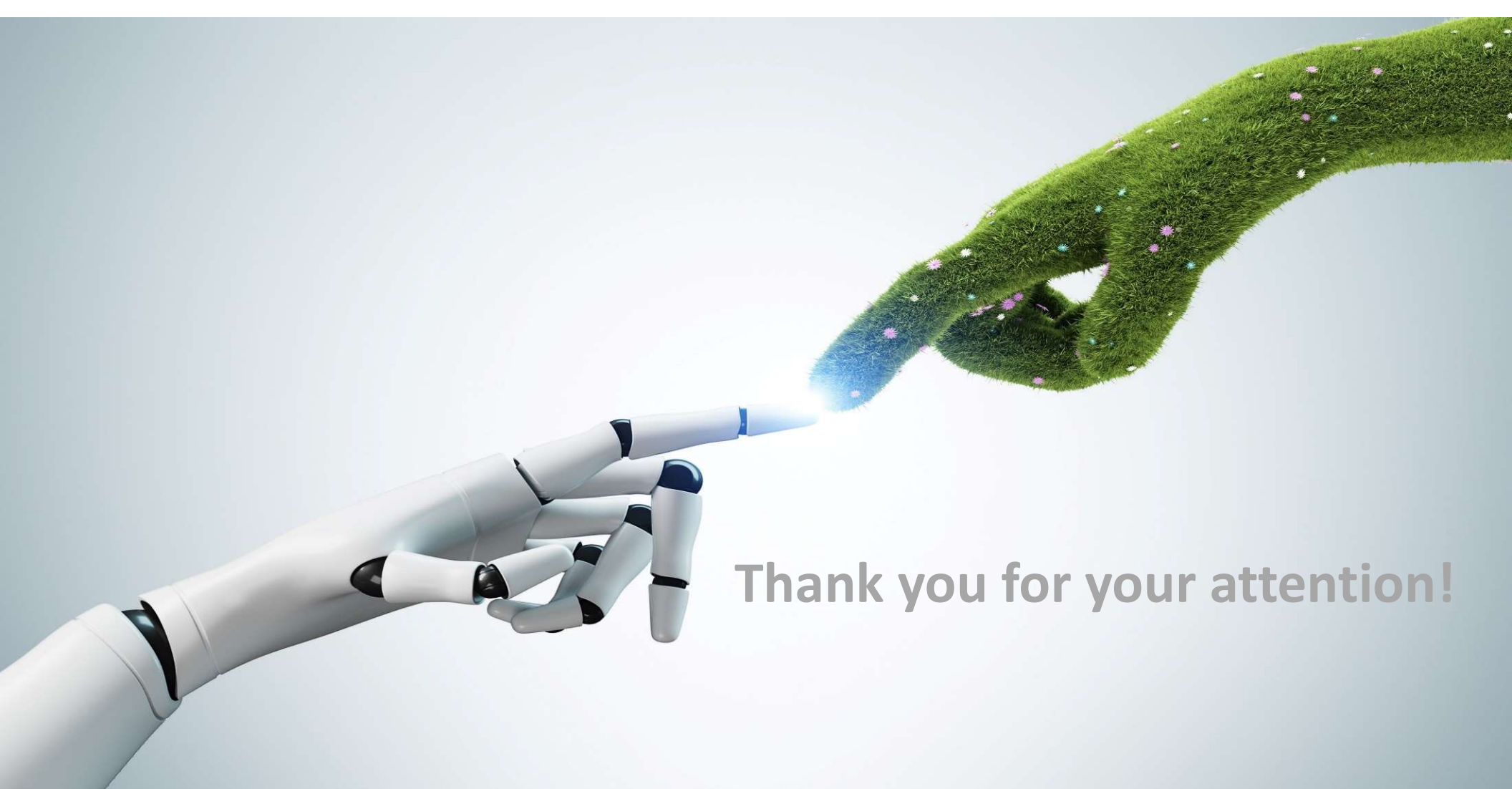
Reduced ROI

Collaborative and mobile robots

Injection molding

OMRON

**Shibaura
Machine**



Thank you for your attention!

E.P.F Elettrotecnica S.r.l.

Headquarters

Via Langhe, 24 - 12061 Carrù (CN) – Italia

+39 0173.75106

info@epf.it



WEB
www.epf.it



SOCIAL
EPF