



Programmable Terminal NA•NB-series

Practices Guide HMI Remote Viewer

NA5-15[]101[]
NA5-12[]101[]
NA5-9[]001[]
NA5-7[]001[]
NB10W-TW0[]B
NB7W-TW[]B
NB5Q-TW0[]B
NB3Q-TW0[]B

Practices
Guide

■ Introduction

This guide provides reference information when using HMI Remote Viewer. It does not provide safety information.

Be sure to obtain the NA·NB-series Programmable Terminal User's Manuals, read and understand the safety points and other information required for use, and test sufficiently before actually using the equipment.

Terms and Conditions Agreement

Warranty, Limitations of Liability

Warranties

- Exclusive Warranty

Omron's exclusive warranty is that the Products will be free from defects in materials and workmanship for a period of twelve months from the date of sale by Omron (or such other period expressed in writing by Omron). Omron disclaims all other warranties, express or implied.

- Limitations

OMRON MAKES NO WARRANTY OR REPRESENTATION, EXPRESS OR IMPLIED, ABOUT NON-INFRINGEMENT, MERCHANTABILITY OR FITNESS FOR A PARTICULAR PURPOSE OF THE PRODUCTS. BUYER ACKNOWLEDGES THAT IT ALONE HAS DETERMINED THAT THE PRODUCTS WILL SUITABLY MEET THE REQUIREMENTS OF THEIR INTENDED USE.

Omron further disclaims all warranties and responsibility of any type for claims or expenses based on infringement by the Products or otherwise of any intellectual property right.

- Buyer Remedy

Omron's sole obligation hereunder shall be, at Omron's election, to (i) replace (in the form originally shipped with Buyer responsible for labor charges for removal or replacement thereof) the non-complying Product, (ii) repair the non-complying Product, or (iii) repay or credit Buyer an amount equal to the purchase price of the non-complying Product; provided that in no event shall Omron be responsible for warranty, repair, indemnity or any other claims or expenses regarding the Products unless Omron's analysis confirms that the Products were properly handled, stored, installed and maintained and not subject to contamination, abuse, misuse or inappropriate modification. Return of any Products by Buyer must be approved in writing by Omron before shipment. Omron Companies shall not be liable for the suitability or unsuitability or the results from the use of Products in combination with any electrical or electronic components, circuits, system assemblies or any other materials or substances or environments. Any advice, recommendations or information given orally or in writing, are not to be construed as an amendment or addition to the above warranty.

See <http://www.omron.com/global/> or contact your Omron representative for published information.

Limitation on Liability; Etc

OMRON COMPANIES SHALL NOT BE LIABLE FOR SPECIAL, INDIRECT, INCIDENTAL, OR CONSEQUENTIAL DAMAGES, LOSS OF PROFITS OR PRODUCTION OR COMMERCIAL LOSS IN ANY WAY CONNECTED WITH THE PRODUCTS, WHETHER SUCH CLAIM IS BASED IN CONTRACT, WARRANTY, NEGLIGENCE OR STRICT LIABILITY.

Further, in no event shall liability of Omron Companies exceed the individual price of the Product on which liability is asserted.

OMRON shall have no liability for any losses, damages or other costs incurred directly or indirectly by DDoS attacks (Distributed Denial of Service), computer viruses or other harmful technical programs, or unauthorized accesses in the event of any infection of "OMRON products", installed software, or all computer devices, computer programs, networks or databases. Customers must take sufficient measures to (1) protect against antiviruses, (2) data input/output (3) restore lost data, (4) prevent "OMRON products" and installed software from being infected by computer virus, and (5) prevent unauthorized access to "OMRON products".

Application Considerations

Suitability of Use

Omron Companies shall not be responsible for conformity with any standards, codes or regulations which apply to the combination of the Product in the Buyer's application or use of the Product. At Buyer's request, Omron will provide applicable third party certification documents identifying ratings and limitations of use which apply to the Product. This information by itself is not sufficient for a complete determination of the suitability of the Product in combination with the end product, machine, system, or other application or use. Buyer shall be solely responsible for determining appropriateness of the particular Product with respect to Buyer's application, product or system. Buyer shall take application responsibility in all cases.

NEVER USE THE PRODUCT FOR AN APPLICATION INVOLVING SERIOUS RISK TO LIFE OR PROPERTY WITHOUT ENSURING THAT THE SYSTEM AS A WHOLE HAS BEEN DESIGNED TO ADDRESS THE RISKS, AND THAT THE OMRON PRODUCT(S) IS PROPERLY RATED AND INSTALLED FOR THE INTENDED USE WITHIN THE OVERALL EQUIPMENT OR SYSTEM.

Programmable Products

Omron Companies shall not be responsible for the user's programming of a programmable Product, or any consequence thereof.

Disclaimers

Performance Data

Data presented in Omron Company websites, catalogs and other materials is provided as a guide for the user in determining suitability and does not constitute a warranty. It may represent the result of Omron's test conditions, and the user must correlate it to actual application requirements. Actual performance is subject to the Omron's Warranty and Limitations of Liability.

Change in Specifications

Product specifications and accessories may be changed at any time based on improvements and other reasons. It is our practice to change part numbers when published ratings or features are changed, or when significant construction changes are made. However, some specifications of the Product may be changed without any notice. When in doubt, special part numbers may be assigned to fix or establish key specifications for your application. Please consult with your Omron's representative at any time to confirm actual

specifications of purchased Product.

Errors and Omissions

Information presented by Omron Companies has been checked and is believed to be accurate; however, no responsibility is assumed for clerical, typographical or proofreading errors or omissions.

Contents

Terms and Conditions Agreement	3
Warranty, Limitations of Liability	3
Application Considerations	4
Disclaimers.....	4
1 Related Manuals	8
2 Precautions	9
3 Overview of the HMI Remote Viewer	10
3-1 System Configuration	10
4 Description of the HMI Remote Viewer Screen	11
4-1 Initial Screen.....	11
4-2 Setup Screen.....	12
4-3 Display and Operation Screens.....	13
5 Setting Procedures	14
6 Setting IP Address of the NJ	15
7 Setting IP Address of the NA	16
8 Setting VNC for the NA	17
8-1 Setting with the Sysmac Studio	17
8-2 Setting from the Device System Menu of the NA.....	18
9 Setting the WE70-AP	20
10 Network Setting for iOS Device	22
11 Installing and Starting the HMI Remote Viewer	23
11-1 Installing the HMI Remote Viewer	23

11-2	Starting the HMI Remote Viewer.....	24
1 2	How to Operate the HMI Remote Viewer	26
12-1	Tap Operation	26
12-2	Drag Operation.....	28
12-3	Flick Operation	29
12-4	Pinch in/Pinch out Operation.....	30
12-5	Deleting the Registered Screen	31
1 3	Setting VNC for the NB.....	32
13-1	Setting IP Address and VNC with the NB-Designer.....	32
13-2	Starting the HMI Remote Viewer (NB)	34
	Revision History	35

1 Related Manuals

The following manuals are related to this manual.

Cat.No.	Model	Manual Name
W501	NX701-□□□□/ NX102-□□□□/ NX1P2-□□□□□□/ NJ501-□□□□/ NJ301-□□□□/ NJ101-□□□□	NJ/NX-series CPU Unit Software User's Manual
W506	NX701-□□□□/ NX701-□□□□/ NX1P2-□□□□□□/ NJ501-□□□□/ NJ301-□□□□/ NJ101-□□□□	NJ/NX-series CPU Unit Built-in EtherNet/IP™ Port User's Manual
W504	SYSMAC-SE2□□□	Sysmac Studio Version 1 Operation Manual
W502	NX701-□□□□/ NX701-□□□□/ NX1P2-□□□□□□/ NJ501-□□□□/ NJ301-□□□□/ NJ101-□□□□	NJ/NX-series Instructions Reference Manual
V118	NA5-15W□□□□ NA5-12W□□□□ NA5-9W□□□□ NA5-7W□□□□	NA-series Programmable Terminal Software User's Manual
V119	NA5-15W□□□□ NA5-12W□□□□ NA5-9W□□□□ NA5-7W□□□□	NA-series Programmable Terminal Device Connection User's Manual
V120	NA5-15W□□□□ NA5-12W□□□□ NA5-9W□□□□ NA5-7W□□□□	NA-series Programmable Terminal Startup Guide
N153	WE70-AP WE70-CL	WE70-AP/CL FA Wireless LAN Unit Operation Manual
0969584-7	W4S1-03B W4S1-05B W4S1-05C	[Instruction Sheet] W4S1 Switching Hub (ENG/JPN)
V109	NB-10W-TW0□□B NB7W-TW□□□B NB5Q-TW0□□B NB3Q-TW0□□B	NB-series Programmable Terminals Startup Guide Manual
V107	NB-10W-TW0□□B NB7W-TW□□□B NB5Q-TW0□□B NB3Q-TW0□□B	NB-series Programmable Terminals Setup Manual
V106	NB-10W-TW0□□B NB7W-TW□□□B NB5Q-TW0□□B NB3Q-TW0□□B	NB-series Programmable Terminals NB-Designer Operation Manual

2 Precautions

- (1) When building an actual system, check the specifications of the component devices of the system, use within the ratings and specified performance, and implement safety measures such as safety circuits to minimize the possibility of an accident.
- (2) For safe use of the system, obtain the manuals of the component devices of the system and check the information in each manual, including safety precautions, precautions for safe use.
- (3) It is the responsibility of the customer to check all laws, regulations, and standards that the system must comply with.
- (4) All rights reserved. No part of this publication may be reproduced, stored in a retrieval system, or transmitted, in any form, or by any means, mechanical, electronic, photocopying, recording, or otherwise, without the prior written permission of OMRON.
- (5) The information in this guide is current as of April 2018.
No patent liability is assumed with respect to the use of the information contained herein. Moreover, because OMRON is constantly striving to improve its high-quality products, the information contained in this guide is subject to change without notice.
- (6) The operation of each design template has been tested using the device configuration indicated in *section 4-1* in this guide. The screen operation after incorporating the template is not guaranteed.

Special information in this document is classified as follows:



Precautions for Safe Use

Indicates precautions on what to do and what not to do to ensure safe usage of the product.



Precautions for Correct Use

Indicates precautions on what to do and what not to do to ensure proper operation and performance.



Additional Information

Additional information to read as required.

This information is provided to increase understanding or make operation easier.

Copyrights and Trademarks

Sysmac and SYSMAC are trademarks or registered trademarks of OMRON Corporation in Japan and other countries for OMRON factory automation products.

Screenshots are used in accordance with Microsoft Corporation guidelines.

Windows is a registered trademark of Microsoft Corporation in the USA and other countries.

Apple, Apple logo, and iPad Air are registered trademarks of Apple Inc. in the USA and other countries. App Store is a service mark of Apple Inc.

ODVA, CIP, CompoNet, DeviceNet, and EtherNet/IP are the registered trademarks of ODVA.

Android and Google Play are the trademarks or registered trademarks of Google LLC.

Company names and product names in this document are the trademarks or registered trademarks of their respective companies.

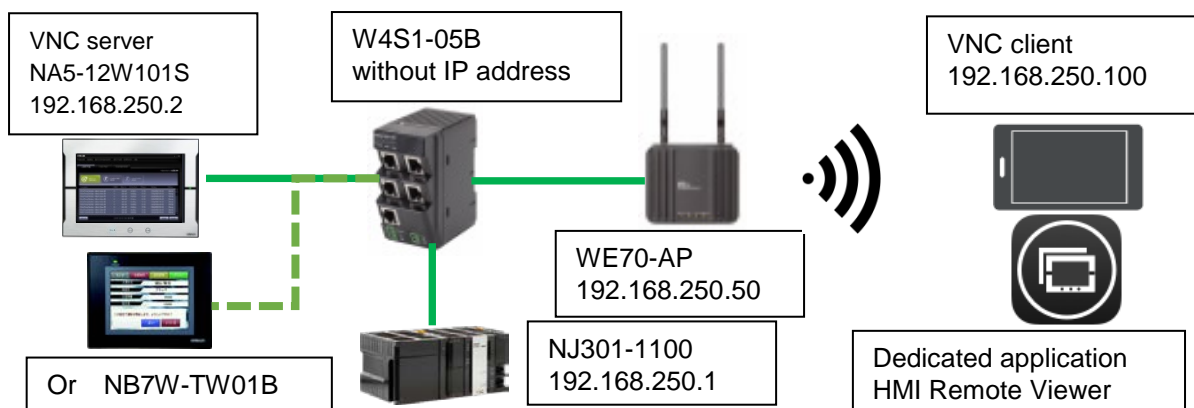
3 Overview of the HMI Remote Viewer

HMI Remote Viewer is an application that provides a remote operation with VNC (Virtual Network Computing) by connecting NA/NB-series to VNC client device including iOS or Android tablet.

This guide describes how to monitor and operate NA/NB screens from a tablet (iOS) using "3-1 System Configuration".

3-1 System Configuration

The system configuration to use the HMI Remote Viewer is as follows:



Manufacturer	Name	Model	IP address
OMRON	CPU Unit	NJ301-1100	192.168.250.1
OMRON	HMI	NA5-12W101S or NB7W-TW01B	192.168.250.2
OMRON	Switching hub	W4S1-05B	-
OMRON	FA-wireless LAN Unit	WE70-AP	192.168.250.50
	iOS device	-	192.168.250.100



Additional Information

As long as IP address is not duplicated, it is not required to set the same IP address as indicated above.



Additional Information

VNC client can also be connected with Personal Computer (PC) software. Before attempting the connection, you need to confirm whether VNC client can be connected to individual software.



Additional Information

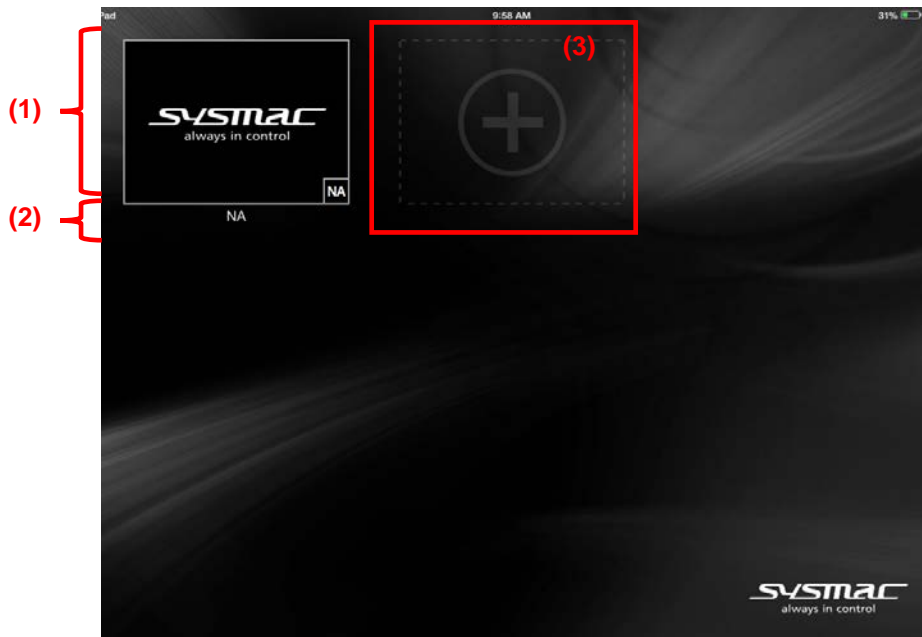
VNC function can be used without connecting the controller.

4 Description of the HMI Remote Viewer Screen

This section describes HMI Remote Viewer screens on the iOS device.

4-1 Initial Screen

This is the initial screen after starting the HMI Remote Viewer.
A list of the registered NA/NB is displayed on the screen.

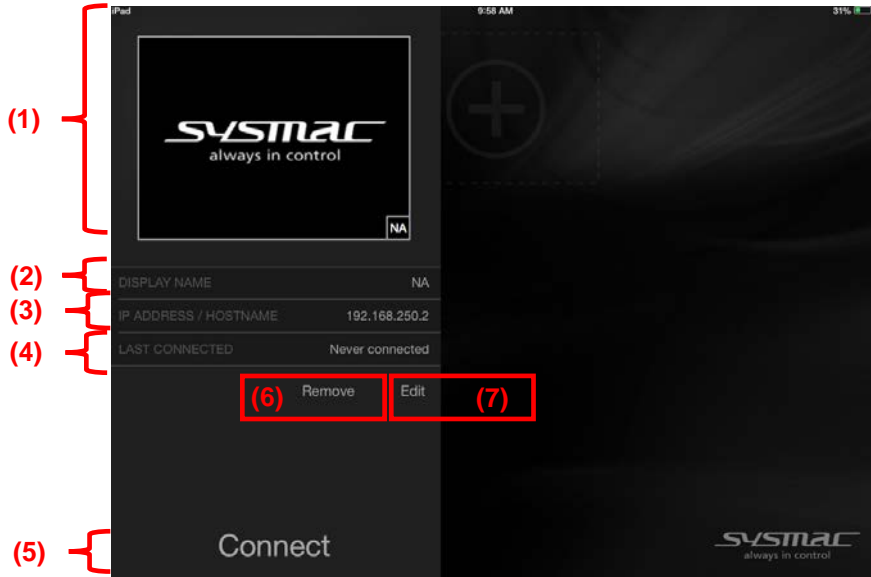


No	Name	Description
1	Thumbnail	<ul style="list-style-type: none"> Moves to the setup screen by pressing a thumbnail. Displays screens at a time when VNC was disconnected in thumbnail view. Displays a Sysmac logo if no connection has been made.
2	Display name	<ul style="list-style-type: none"> Sets any device name. Displays an IP address if no name is set.
3	“+” button	<ul style="list-style-type: none"> Sets a new screen by pressing this button.

4. Description of the HMI Remote Viewer Screen

4-2 Setup Screen

This screen sets devices to be connected.



No	Name	Description
1	Thumbnail	<ul style="list-style-type: none">• Displays screens at a time when VNC was disconnected in thumbnail view.• Displays a Sysmac logo if no connection has been made.
2	Display name	<ul style="list-style-type: none">• Displays a screen name.• Displays a name under the thumbnail on the initial screen.• Displays an IP address under the thumbnail on the initial screen if no name is set.
3	IP/ Host	<ul style="list-style-type: none">• Displays an IP address to be connected.
4	Last connected	<ul style="list-style-type: none">• Displays the data and time when VNC was most recently connected.
5	“Connect” button	<ul style="list-style-type: none">• Connects VNC to the NA/NB with the current setting by pressing this button.
6	“Remove” button	<ul style="list-style-type: none">• Clears the current setting by pressing this button.• The cleared screen will not be displayed on the initial screen.
7	“Edit” button	<ul style="list-style-type: none">• Edits each setting by pressing this button.

4.Description of the HMI Remote Viewer Screen

4-3 Display and Operation Screens

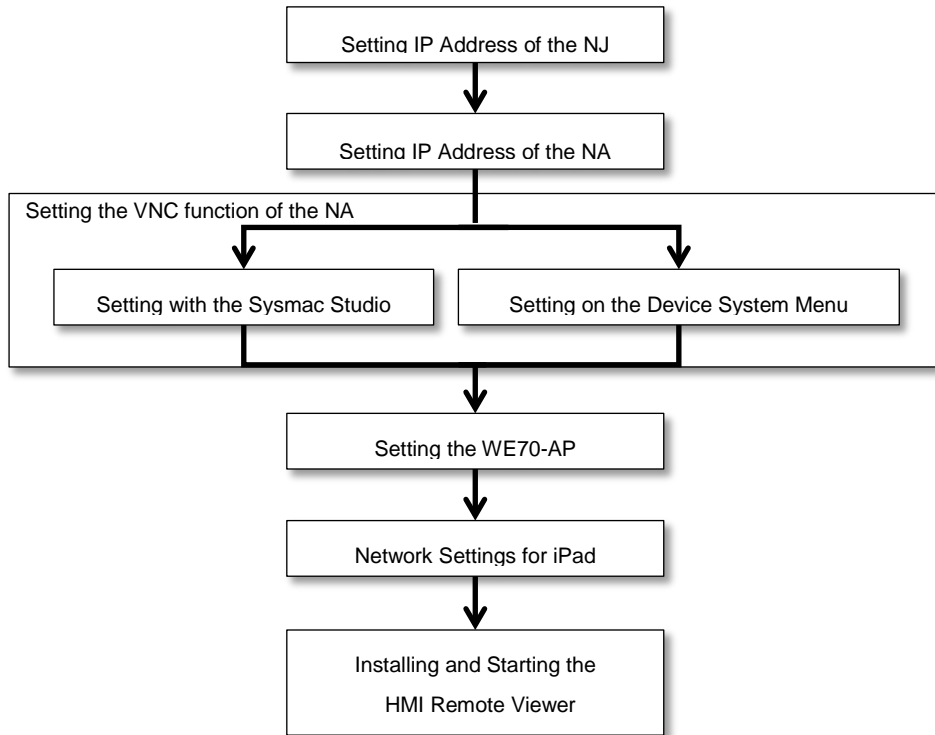
This screen displays and operates NA/NB screens.



No	Name	Description
1	Operation screen	<ul style="list-style-type: none"> Displays the connected NA/NB screen. Operation is also available from a tablet.
2	“Disconnect” button	<ul style="list-style-type: none"> Disconnects VNC to the connected NA/NB. Moves to the setup screen after disconnecting VNC .
3	“Zoom in” button	<ul style="list-style-type: none"> Zoom in the current view.
4	“Zoom out” button	<ul style="list-style-type: none"> Zoom out the current view.
5	“Share” button	<ul style="list-style-type: none"> Performs the “Share” function provided by Apple.

5 Setting Procedures

To “install the HMI Remote Viewer to an iOS device” and “perform VNC to the NA”, the following procedure is required.



The required settings and procedures to perform VNC connection between the iOS device and NA are described in the following pages.



Additional Information

To use VNC connection, setting for NJ is not necessarily required.



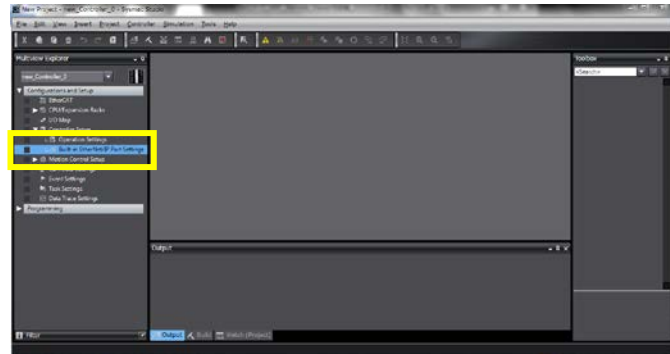
Additional Information

When connecting to NB-series, the same procedure is used; however, replace the statement “Setting IP Address of the NA” with “Setting IP Address of the NB”.

6 Setting IP Address of the NJ

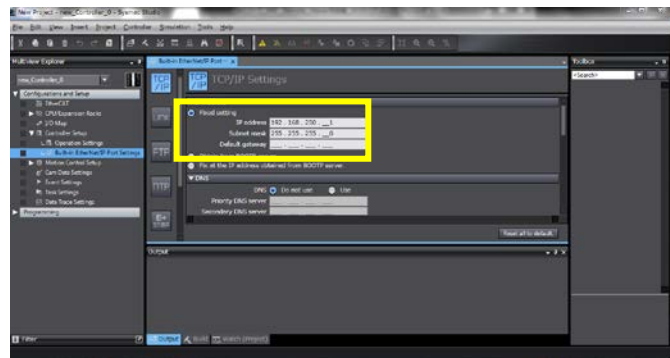
Perform the following procedure to set an IP address of the NJ.

1. Select [Multiview Explorer]->[Configurations and Setup]->[Controller Setup]->[Built-in Ethernet/IP Port Settings] on the NJ project. Double-click (or right-click-> Edit) to open the "Built-in Ethernet/IP Port Settings" table.



2. Set the IP address and subnet mask as follows;

IP address : 192.168.250.1
Subnet mask : 255.255.255.0

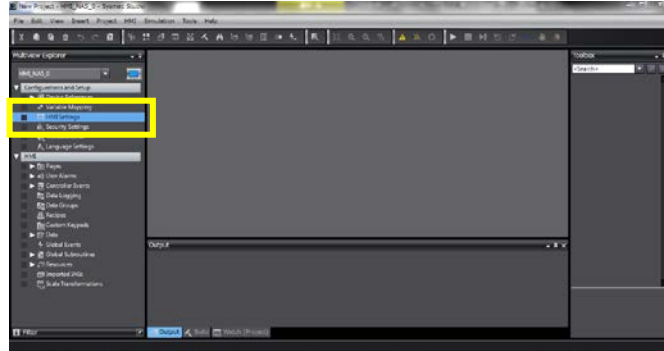


3. Transfer the project to the NJ.

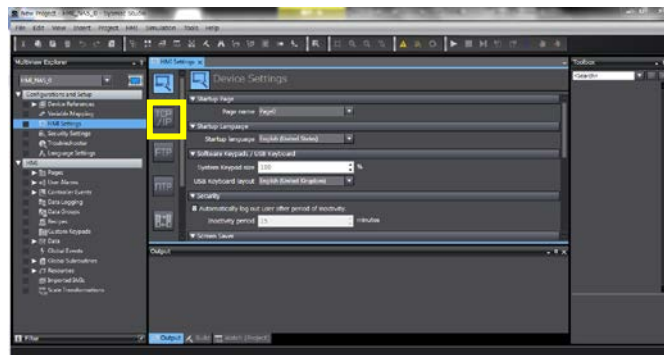
7 Setting IP Address of the NA

Perform the following procedure to set an IP address of the NA.

1. Select [Multiview Explorer]->[Configurations and Setup]->[HMI Settings] on the NA project. Double-click (or right-click-> Edit) to open the "HMI Settings" table.

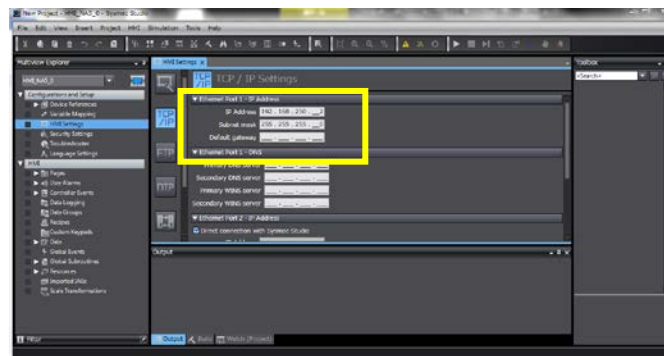


2. Select the  icon on the "HMI Settings" table.



3. Set the IP address and subnet mask of Ethernet port 1 as follows;

IP address : 192.168.250.2
Subnet mask : 255.255.255.0



8 Setting VNC for the NA

To publish the displayed NA screen, VNC server must be enabled.

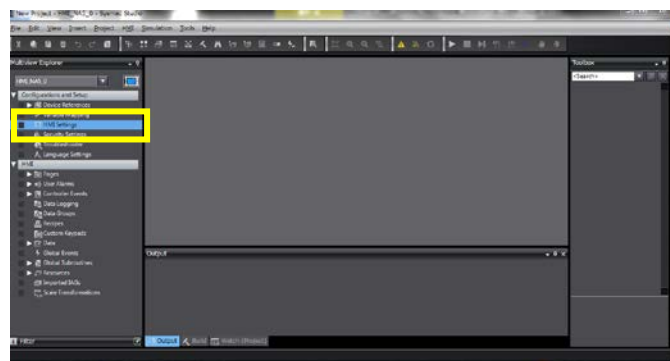
How to enable VNC server is described below.


This setting can be made either by HMI Settings from the Sysmac Studio or from the Device System Menu of the NA.

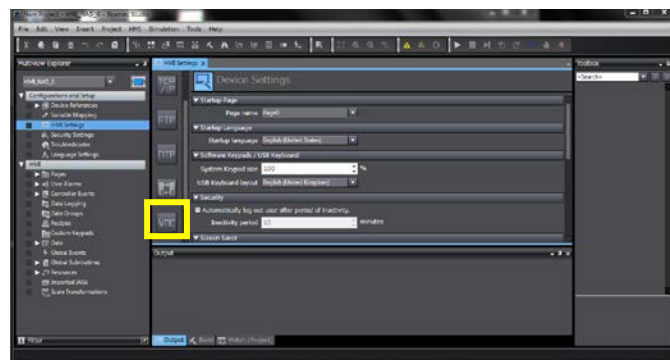
8-1 Setting with the Sysmac Studio

Perform the following procedure to enable VNC function with the Sysmac Studio.

1. Select [Multiview Explorer]->[Configurations and Setup]->[HMI Settings] on the NA project. Double-click (or right-click-> Edit) to open the "HMI Settings" table.



2. Select the  icon on the "HMI Settings" table.



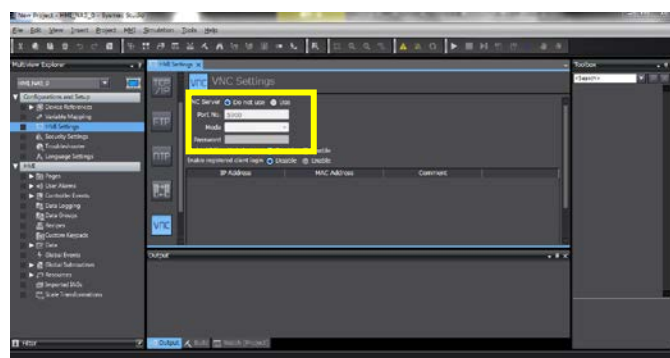
3. Select [Use] for [VNC Server] and set as follows;

VNC: Use

Port No. : 5900 (default)

Mode: Choose from "View Only" or "View and Operate".

Password: must be set (5 to 8 alphanumeric characters long)



4. Transfer the project to the NA.

8.Setting VNC for the NA

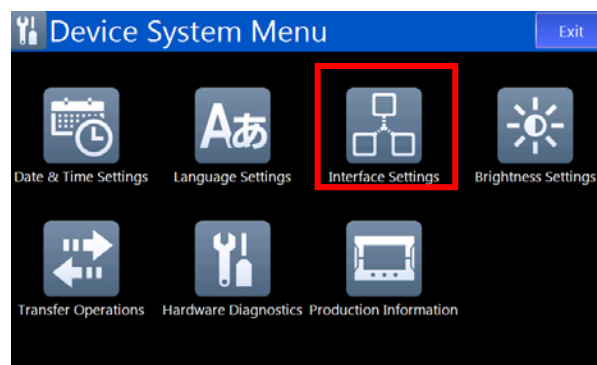
8-2 Setting from the Device System Menu of the NA

Perform the following procedure to enables VNC function on the Device System Menu while NA is in operation.

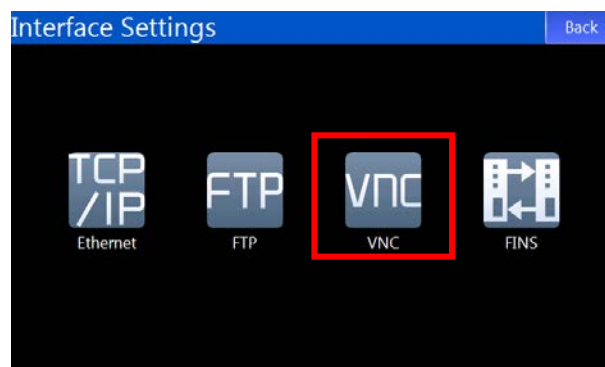
1. Start the NA and select “Device System Menu” on the “Project System Menu” screen.



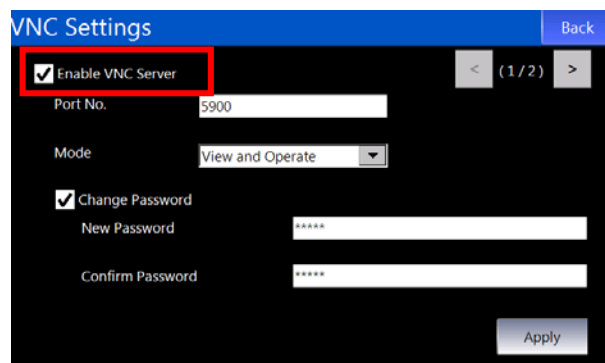
2. Select “Interface Settings”.



3. Select “VNC”.

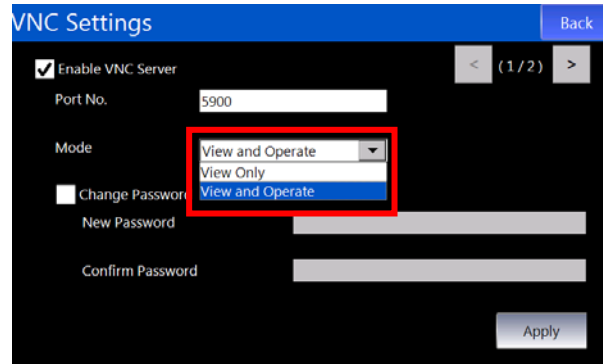


4. Select “Enable VNC Server”, which allows you to set the VNC function.



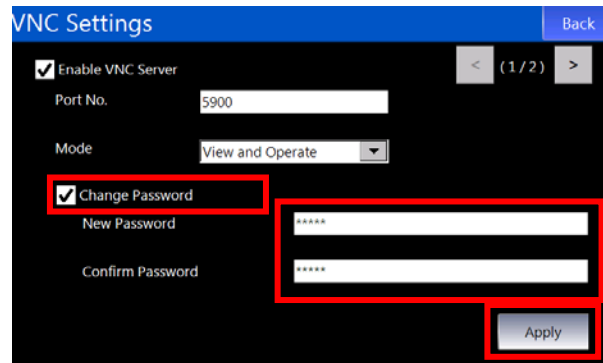
8. Setting VNC for the NA

5. Select either of “View Only” or “View and Operate” from the “Mode” pull-down menu.



The screenshot shows the "VNC Settings" page with a dark background. At the top right is a "Back" button. Below it is a navigation bar with "< (1/2) >". The "Enable VNC Server" checkbox is checked. The "Port No." field contains "5900". The "Mode" dropdown menu is open, showing three options: "View and Operate" (highlighted in blue), "View Only", and "View and Operate". The "Change Password" checkbox is unchecked. Below it are "New Password" and "Confirm Password" input fields. An "Apply" button is at the bottom right.

6. Select “Change Password”, set a new password (5 to 8 alphanumeric characters long), and click the “Apply” button.



The screenshot shows the "VNC Settings" page with a dark background. At the top right is a "Back" button. Below it is a navigation bar with "< (1/2) >". The "Enable VNC Server" checkbox is checked. The "Port No." field contains "5900". The "Mode" dropdown menu is set to "View and Operate". The "Change Password" checkbox is checked. Below it are "New Password" and "Confirm Password" input fields, both containing "*****". An "Apply" button is at the bottom right.

9 Setting the WE70-AP

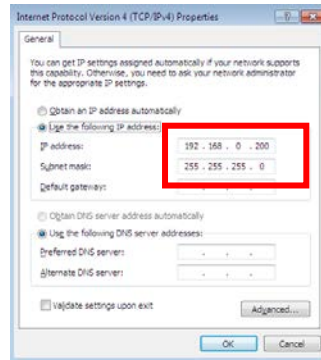
A Wifi router is required to connect to an iOS device with Ethernet communications. Perform the following procedure to connect the NA-series to an iOS device using OMRON "WE70-AP".

1. Connect the WE70-AP to a PC with an Ethernet cable, and turn on the WE70-AP.

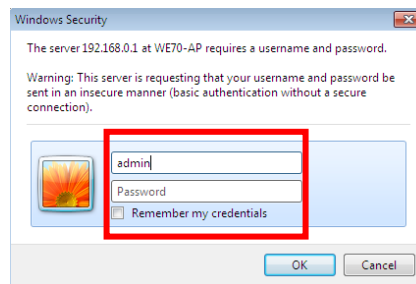
2. Set the IP address and subnet mask of the PC as follows;

IP address : 192.168.0.200
Subnet mask : 255.255.255.0

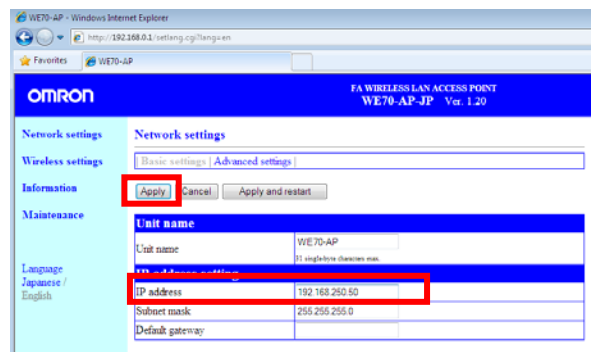
* The above is just an example. You can set any IP address and subnet mask as long as they are not duplicated among other devices.



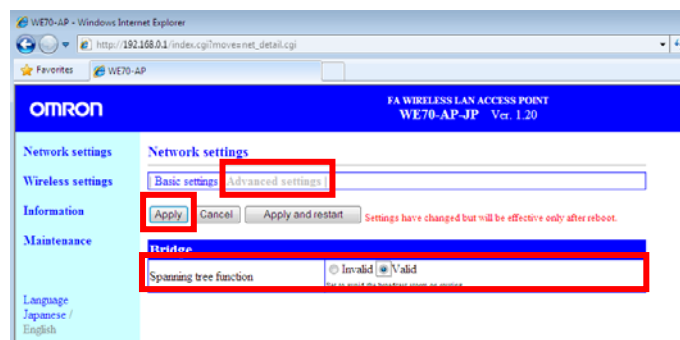
3. Start the Web browser and enter <http://192.168.0.1> (default IP address of WE70-AP) on the address bar. A dialog on the right is displayed. Set "admin" for the user name and leave the password box blank, and press the "OK" button.



4. The "Network settings" screen is displayed on the browser. Set "192.168.250.50" to the IP address and click the "Apply" button.

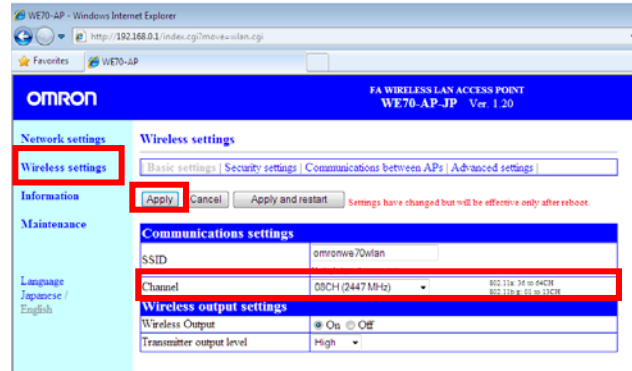


5. Click "Advanced settings" to open. Select "Valid" for "Spanning tree function" and click the "Apply" button.



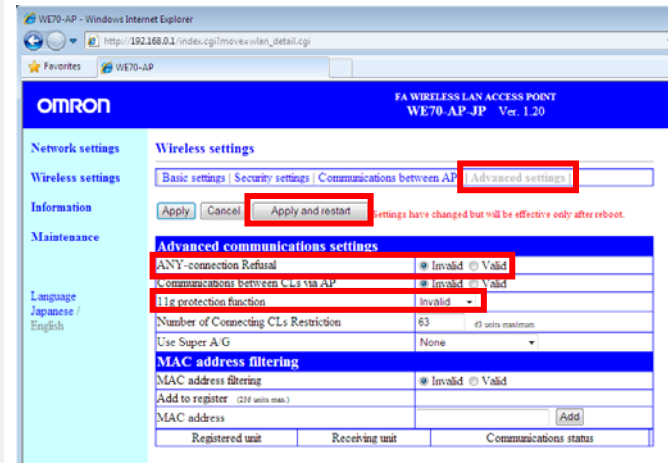
9. Setting the WE70-AP

6. Click "Wireless settings" to open. Set "08CH(2447 MHz)" to "Channel", and click the "Apply" button.



7. Click "Advanced settings" to open. Set "Invalid" to "ANY-connection Refusal", set "Invalid" to "11g protection function", and click the "Apply and restart" button.

This ends the setting of the WE70-AP.



Additional Information

For how to wire and install the WE70-AP, refer to "WE70-AP/CL FA Wireless LAN Unit Operation Manual (Cat. No. N153)".



Additional Information

After restart, IP address of the WE70-AP will be changed.

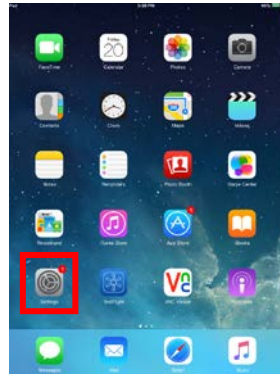
Accordingly, set "192.168.250.50" to the IP address of the web browser when using the web browser again to set the WE70-AP.

1 0 Network Setting for iOS Device

To connect VNC to the NA using the HMI Remote Viewer, network setting for iOS is required.

Perform the following procedure to set the iOS device network.

1. Start the iOS device. Touch "Settings" on the home screen.



2. Touch "Wi-Fi" to display the setting screen for Wi-Fi. Enable Wi-Fi, and select a network name for the WE70-AP (default is "omronwe70wlan").

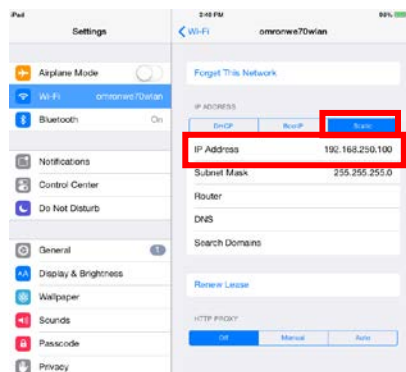


3. Touch "omronwe70wlan" to open the network setting.



4. Set the network setting to "Static" and set the IP address and subnet mask as follows;

IP address : 192.168.250.100
Subnet mask : 255.255.255.0



1 1 Installing and Starting the HMI Remote Viewer



HMI Remote Viewer is the dedicated application that monitors and operates NA/NB screens, which is a VNC server.

The following procedure describes steps from “starting the HMI Remote Viewer” to “connecting the NA-series with VNC connection”.

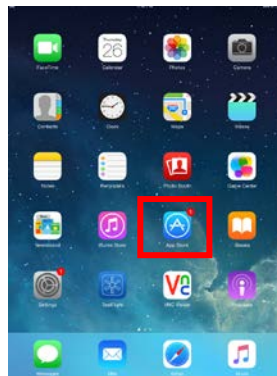
HMI Remote Viewer of iOS version can be installed from App Store, and Android version can be installed on Google Play for free of charge, respectively.



1 1-1 Installing the HMI Remote Viewer

Perform the following procedure to install HMI Remote Viewer to the iOS device.

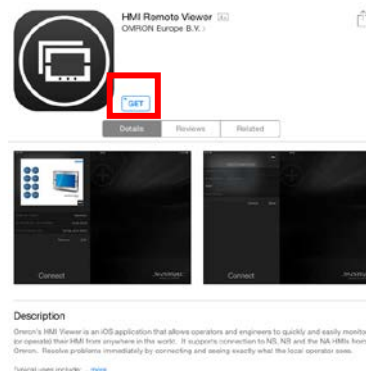
1. Start the iOS device. Touch “App Store” on the home screen.



2. Touch the search box and enter “HMI Remote Viewer”.



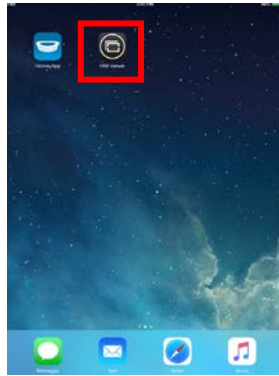
3. Install the HMI Remote Viewer.




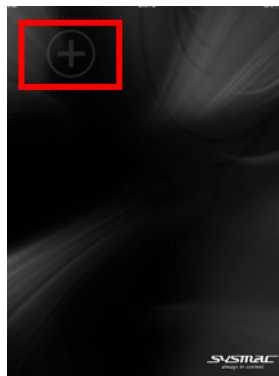
11. Installing and Starting the HMI Remote Viewer

11-2 Starting the HMI Remote Viewer

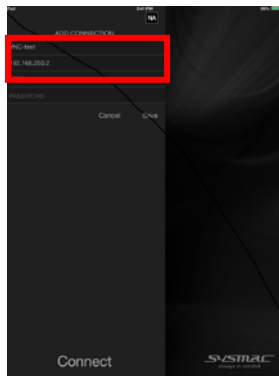
1. After the HMI Remote Viewer is installed, "HMI Viewer" is added on the home screen.
Touch "HMI Viewer" to start the HMI Remote Viewer.



2. Touch  on the initial screen of the HMI Remote Viewer.



3. Set "VNC-test (desired name)" to "Display name", set "192.168.250.2 (IP address of the NA)" to "IP/Host", and touch "Save".

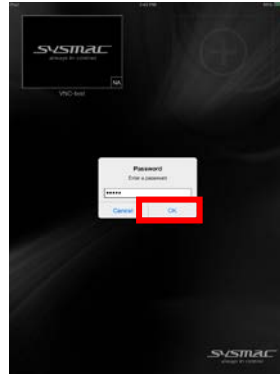


4. Touch "Connect".



11. Installing and Starting the HMI Remote Viewer

5. Enter the password that you set for the VNC settings of the NA, and touch "OK".



6. NA screen is displayed on the iOS device. Make sure that the screen is operational.

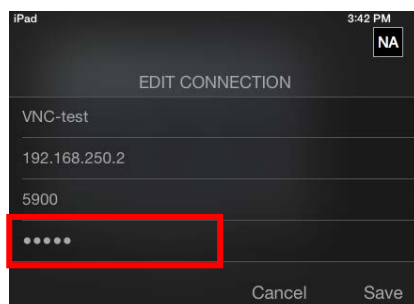


7. To disconnect the VNC connection, touch "Disconnect" shown on the top left of the screen.



Additional Information

If you set a password in step 3 when setting an IP address, the password entry in step 5 can be skipped.



1 2 How to Operate the HMI Remote Viewer

This section describes how to operate the HMI Remote Viewer on the NA-series during VNC connection.

12-1 Tap Operation

Tapping is a gesture to briefly touch a screen surface with fingertip.

The following explains a tap operation that is available during the VNC connection.

Single tap

Touch the surface once with fingertip. This is the same motion when the NA screen is tapped/ clicked once.
This gesture is used for basic operations, for instance, clicking a button or selecting a list.



Double tap

Rapidly touch the surface twice with fingertip. This is the same motion when the NA screen is tapped/ clicked twice. This gesture is mainly used to scale up or scale down a trend graph.

By double tapping the graph,



the area will be enlarged.



12.How to Operate the HMI Remote Viewer

Long tap

Press and hold the surface with fingertip.

This is the same motion when the NA screen is pressed and held down.

This gesture is mainly used to run a momentary button.

During a long tap, the tapped momentary button is being pressed down.



12-2 Drag Operation

Dragging is a gesture to move fingertip over the surface while the object is being pressed and held down.

The following explains a drag operation during the VNC connection.

1. This is the same motion when dragging an object on the NA screen.

This gesture is used to move a slider or scroll bar.

Press the object that you want to move.



2. Move fingertip over the surface while the object is being pressed and held down, the object follows the movement of fingertip.



3. Move the object to the desired location and drop it by releasing the fingertip. The object will be placed in the location.



12-3 Flick Operation

Flicking is a gesture to quickly brush the surface with fingertip.

The following explains a flick operation during the VNC connection.

1. Touch the screen and quickly brush the surface with fingertip. This gesture is used to scroll the listed items at once.

Touch any location on the screen.



2. Quickly brush the surface with fingertip in an upward direction, the list will be scrolled down smoothly in a downward direction.



12-4 Pinch in/Pinch out Operation

Pinching is a gesture to touch the surface with two fingers.

The following explains the pinch in/pinch out operations during the VNC connection.

Pinch out

Touch the surface with two fingers and bring them wider together. This gesture is used to enlarge the screen.



Pinch in

Touch the surface with two fingers and bring them closer together.

This gesture is used to scale down the enlarged screen.

* The screen size cannot be reduced right after the connection.

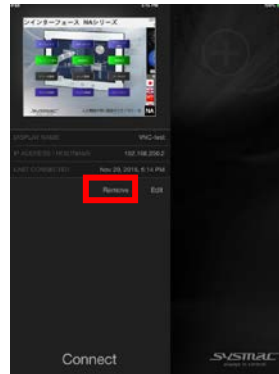


12.How to Operate the HMI Remote Viewer

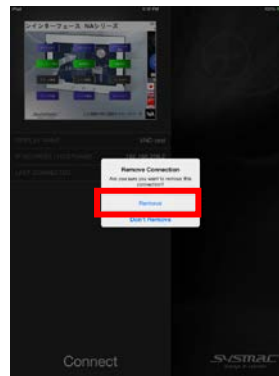
12-5 Deleting the Registered Screen

The following explains how to delete the screens registered with the HMI Remote Viewer.

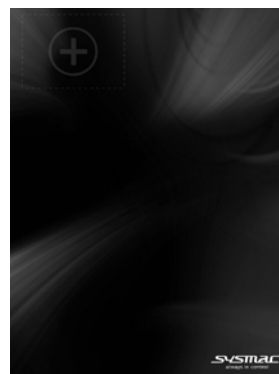
1. Touch "Remove" on the setup screen.



2. A pop up is displayed. Touch "Remove".



3. The registered screen is deleted.



1 3 Setting VNC for the NB

Since the VNC function has been added to NB-Designer V1.46 and later, a remote connection using the HMI Remote Viewer is also supported by NB-series.

How to set VNC function for NB-series is described below.

How to connect the WE70 AP, iOS device, and HMI Remote Viewer is the same as when using NA. Accordingly, for the information, refer to *sections 9 to 11* in this guide.

13-1 Setting IP Address and VNC with the NB-Designer

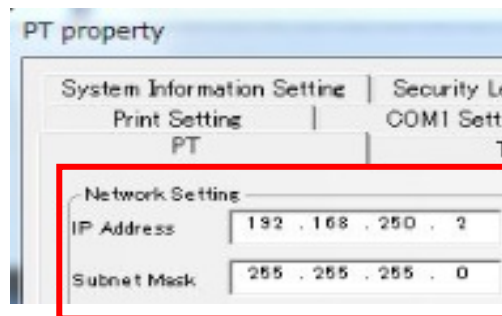
Perform the following procedure to enables IP address and VNC function with the NB-Designer.

1. Double-click the PT placed on the Configurations and Setup window to display PT property.



2. Select the "PT" tab and set the IP address and subnet mask for network setting as follows;

IP Address : 192.168.250.2
Subnet Mask : 255.255.255.0



3. Select "Enable VNC"



13.Setting VNC for the NB

4. Set numeric passwords in range from 0 to 4294967295. (Within the range, no restrictions on the number of digits). A password must be set for monitor mode and operation mode, respectively. When the same password is set for both modes, the password is set for operation mode.



PT Task Bar PT Extended Ph

Network Setting

IP Address: 192 . 168 . 250 . 2

Subnet Mask: 255 . 255 . 255 . 0

Default Gateway: 0 . 0 . 0 . 0

Communication Setting

Display Setting

Display mode: Horizontal Vertical

Field Bus Setting

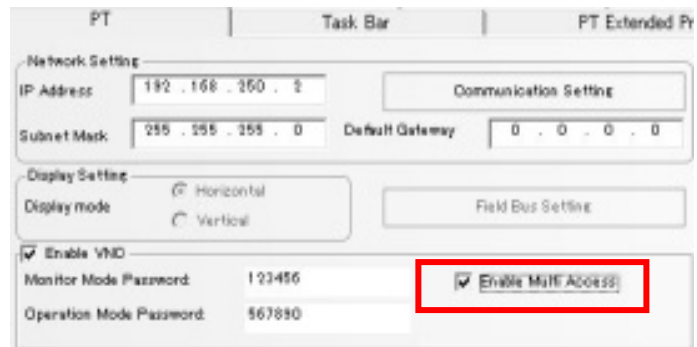
Enable VNC

Monitor Mode Password: 123456

Operation Mode Password: 567890

Enable Multi Access

5. If you want to log-in from multiple clients, select "Enable Multi Access".



PT Task Bar PT Extended Ph

Network Setting

IP Address: 192 . 168 . 250 . 2

Subnet Mask: 255 . 255 . 255 . 0

Default Gateway: 0 . 0 . 0 . 0

Communication Setting

Display Setting

Display mode: Horizontal Vertical

Field Bus Setting

Enable VNC

Monitor Mode Password: 123456

Operation Mode Password: 567890

Enable Multi Access

Precautions for Correct Use

When logging-in from multiple clients with VNC, there is no restriction on the number of devices to be connected simultaneously. However, the response speed of screens may be deteriorated when the number of connected devices increases. Therefore, you need to check acceptable number of devices to be connected in your environment before the connection.

Precautions for Correct Use

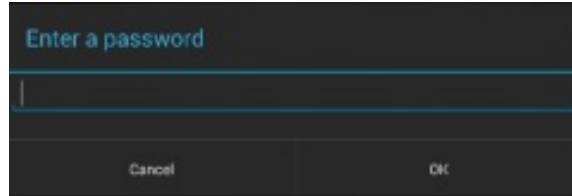
You can set values start with 0, such as "001234", as a password on the NB-Designer, however, 0 will be ignored and the password will be set as "1234".

If you enter "001234" when logging- in, an error will occur.

13-2 Starting the HMI Remote Viewer (NB)

Basically, the operation method is the same as *Section 11-2 Starting the HMI Remote Viewer* in this guide. Only the difference is the log-in operation.

1. Start the HMI Remote Viewer and display "Enter a password" screen.
When a monitor mode password is entered, this is operated as monitor mode that enables only monitoring from VNC client.
When an operation mode password is entered, this is operated as operation mode that also enables operation from VNC client.



Revision History

Revision code	Date	Revised content
01	January, 2016	Original production
02	April, 2018	Add some statements since HMI Remote Viewer is newly supported by NB-series.

OMRON Corporation Industrial Automation Company

Tokyo, JAPAN

Contact: www.ia.omron.com

Regional Headquarters

OMRON EUROPE B.V.

Wegalaan 67-69, 2132 JD Hoofddorp
The Netherlands
Tel: (31)2356-81-300/Fax: (31)2356-81-388

OMRON ELECTRONICS LLC

2895 Greenspoint Parkway, Suite 200
Hoffman Estates, IL 60169 U.S.A
Tel: (1) 847-843-7900/Fax: (1) 847-843-7787

OMRON ASIA PACIFIC PTE. LTD.

No. 438A Alexandra Road # 05-05/08 (Lobby 2),
Alexandra Technopark,
Singapore 119967
Tel: (65) 6835-3011/Fax: (65) 6835-2711

OMRON (CHINA) CO., LTD.

Room 2211, Bank of China Tower,
200 Yin Cheng Zhong Road,
PuDong New Area, Shanghai, 200120, China
Tel: (86) 21-5037-2222/Fax: (86) 21-5037-2200

Authorized Distributor:

© OMRON Corporation 2018 All Rights Reserved.
In the interest of product improvement,
specifications are subject to change without notice.

Cat. No. V430-E1-02

0418(0418)