

Product

End-of-Life Manual

FZ5-series vision systems

Product range

FZ5-series

Model names

FZ5-1200

FZ5-1200-10

FZ5-1205

FZ5-1205-10

FZ5-800

FZ5-800-10

FZ5-805

FZ5-805-10



Size in mm:

H x W x D :260 x 308 x 104

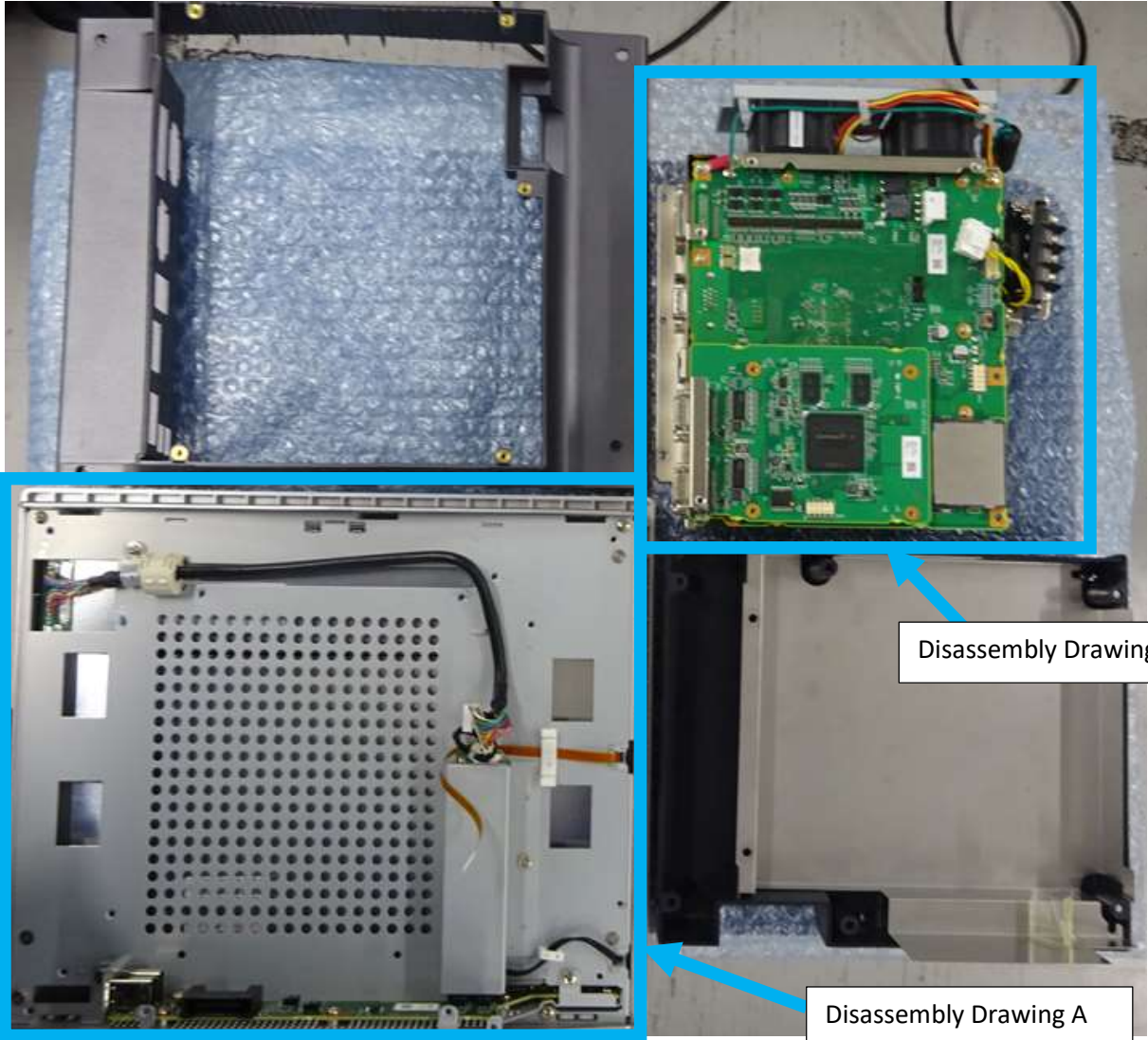
Weight in g:

3400

End-of-life instructions

The components of the products that optimize the recycling process are specified below.

This product contains **printed circuit boards, LCD screen and battery** which are recommended to be treated separately during the End of Life operations.

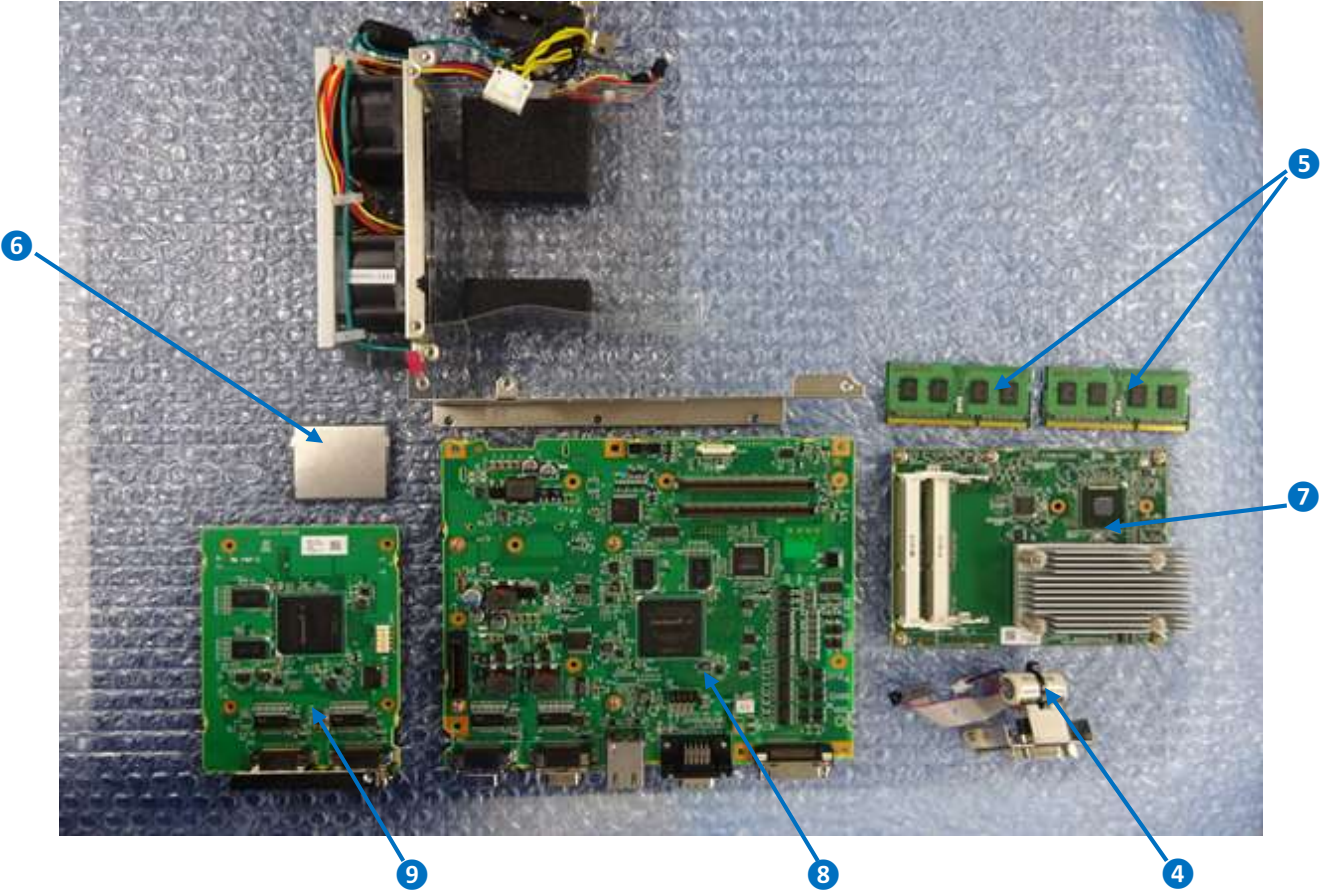


Disassembly Drawing A



Recommendation	Number on drawing	Components	Weight	Comment
Special treatment	1	LCD	About 750g	-
	2	PCBA	About 40g	-
	3	PCBA	About 10g	-

Disassembly Drawing B



Recommendation	Number on drawing	Components	Weight	Comment
Special treatment	4	Battery	About 10g	Manganese Dioxide Primary Lithium Battery
	5	PCBA (SO-DIMM)	About 10g	2 pieces
	6	PCBA (CFAST)	About 10g	-
	7	PCBA	About 100g	-
	8	PCBA	About 200g	-
	9	PCBA	About 60g	-