

WS02-NCTC1-E

CX-Position

Set, transfer, store, and print position control unit data and monitor operation online

Increase productivity in all position control tasks, from design and startup to system maintenance.

Key Features

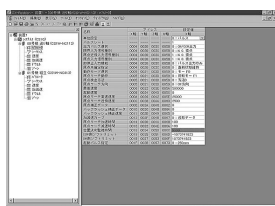
The CX-Position software simplifies every aspect of position control, from creating/editing the data used in Position Control Units (NC Units) to communicating online and monitoring operation. The software is equipped with functions that can improve productivity, such as automatically generating project data and reusing existing data.

Creating and managing data

Data can be created for various applications

The CX-Position enables data for multiple NC Units on up to 1,000 PLCs to be handled as 1 project. Data is displayed in tree format and the data for an NC Unit can be moved or copied (overwritten) between PLCs in the project tree. This feature allows data to be edited and re-used in other PLCs or NC Units.

- The CX-Position can read information from NC Units connected online and automatically generate project data.
- Data created for a C200HW-NC□□□□ using the SYSMAC-NCT can be imported and used as data for the CS1W-NC□□□□ or CJS1W-NC□□□□.



NC Monitor

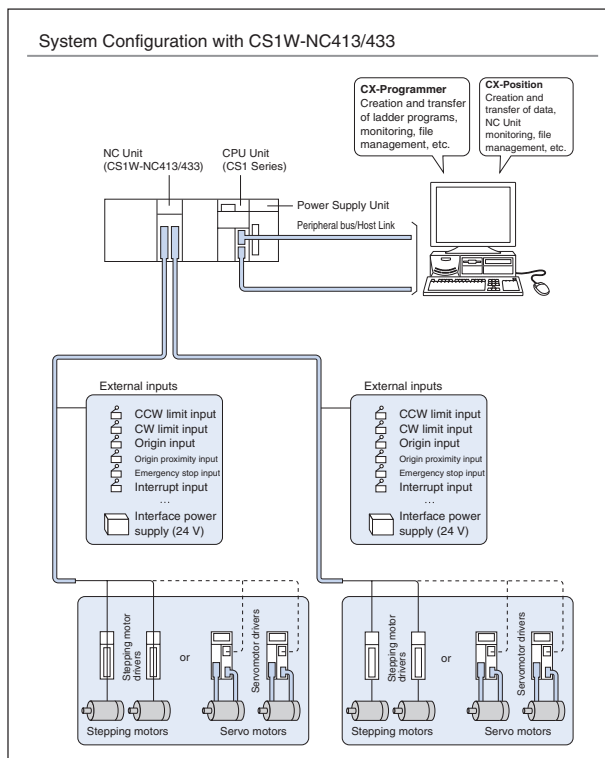
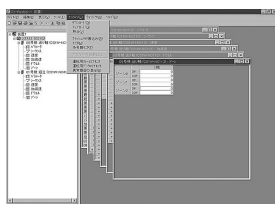
Display the NC units' present positions, error codes, sequence numbers, and I/O status.

The sequence numbers and present positions can be displayed for up to 4 Units. In addition, the contents of the operating memory area and operating data area can be monitored and the error log can be displayed.

Communications

Communicate with NC units through the network.

It is possible to communicate with NC Units through the Fins-Gateway. Depending on the FinsGateway driver version, HostLink or Ethernet. can be used to perform online operations (monitoring operation or transferring/verifying parameters, sequences, etc.) with the NC Unit.



Specifications

Compatible Position Control Units:	CS Series: CS1W-NC113/NC133/NC213/NC413/NC433 CJ Series: CJ1W-NC113/NC133/NC213/NC413/NC433
Basic Functions	Create, edit, and print the Position Control Unit's parameter data, sequence data, speed data, acceleration/deceleration data, dwell times, and zone data. Monitor the Position Control Unit's operating status.
Created files	CX-Position project files (*.nci) Contents: Parameter data, sequence data, speed data, acceleration/deceleration data, dwell times, and zone data
Operating Environment	
CPU:	Pentium 100 MHz or faster CPU
OS:	Windows 95, 98, NT4.0, W2000 or XP
Compatible PLCs:	
CS Series and CJ Series	

ALL DIMENSIONS SHOWN ARE IN MILLIMETERS.

To convert millimeters into inches, multiply by 0.03937. To convert grams into ounces, multiply by 0.03527.