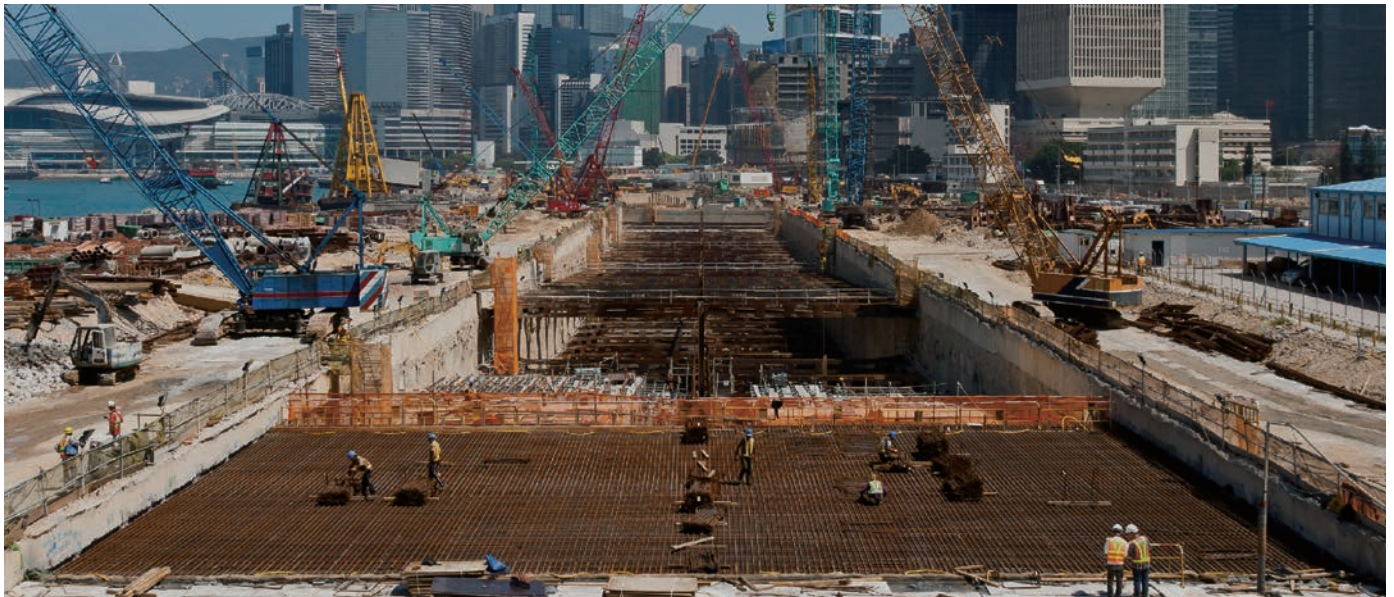


Environment resistance

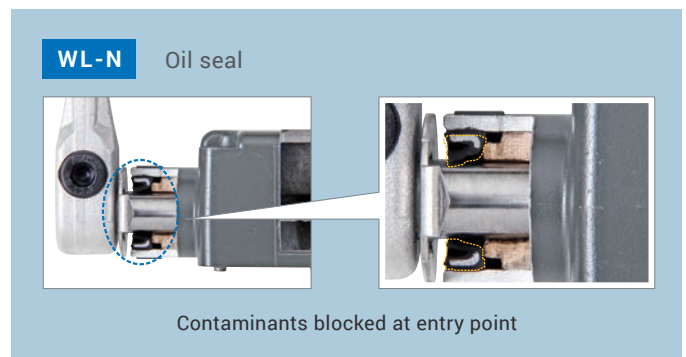
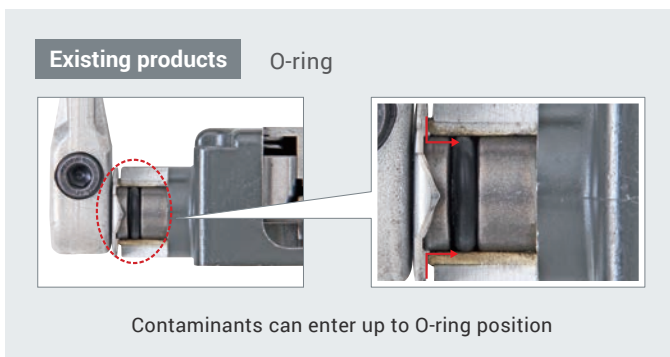
Stabilizing operation of infrastructure equipment by boosting environment resistance

Stable operation is a must for construction elevators, railway gates, and other infrastructure equipment. These machines, however, often operate under harsh conditions, with high humidity, dust (sand, soil, etc.), and electrical noises, that raise their risk of failure compared to devices used within factories.



Delivering environment resistance and high reliability under harsh conditions such as high temperatures, high humidity, and dust

The WL-N limit switch, used to detect construction elevator cage position and the opening and closing of elevator doors, employs our unique oil seal structure to keep out contaminants. This allows for better resistance against contamination by oil and other substances compared to existing devices, reducing the risk of failure. The P1 weather-resistant WL-N limit switch can be used outdoors.



P-level reliability (estimated failure rate of 1 / 10 million uses)

The WL-N limit switch is standardly equipped with crossbar contacts with high contact reliability to support standard loads and micro loads. With 5 VDC and 1 mA resistive load, the environment resistant WL-N model delivers high P-level reliability (whereas the WL model is of N-level reliability).

WL	N-level	Estimated failure rate of 1 / 2 million uses
WL-N	P-level	Estimated failure rate of 1 / 10 million uses

Once a contact has been used to open and close a load, it can no longer be used for lower loads.

Preventing control panel issues by using site-appropriate products

Device failure in infrastructure equipment and at construction sites can lead to major accidents. Control panels equipped with devices such as relays, power supplies, and monitoring relays therefore must be of a quality suited for use in construction site environments.

Highly-sealed plug-in terminal relays for your environment and purpose

Plastic sealed relay MYQ

High reliability even in dusty environments and environments that can cause salt damage.



Hermetically sealed relay MYH

High reliability even in environments with flying dust and corrosive gases (such as chloric, sulfuric, and silicone gases).



Power supplies with PCBs coating for better humidity/dust resistance

Our power supplies support ambient operating temperatures of -40°C to 70°C and humidity of up to 95%, with PCBs coated for dust resistance, allowing for use in cold to tropical regions and in humid and dusty environments. They meet safety standards even in altitudes as high as 3,000 m with low air pressure. * 1

S8VK-S

(Single-phase 100 to 240 VAC input)



S8VK-WA

(Three-phase 200 to 240 VAC input)



S8VK-WB

(Three-phase 380 to 480 VAC input)

* 1. Refer to the datasheets for S8VK-S (Cat. No. T205-E1-11) and S8VK-W (Cat. No. T219-E1-08) for information on supported standards.

Monitoring relays with less risk of failure caused by inverter noise from motors

Our noise-resistant products have higher noise resistance compared to existing devices, reducing the risk of failure caused by inverter noise from motors of construction elevators and other infrastructure equipment. Our monitoring relays (K8AK/K8DS) detect power supply failures in motors.

Existing products Condenser voltage divider method

Heating caused by inverter noise

K8AK/K8DS Switching-mode power supply method

No heating

K8AK Series

K8DS Series



Existing general phase-sequence/phase-loss and other relays use the condenser voltage divider method, which could lead to heating caused by inverter noise. The K8AK/K8DS Series ensures safe and reliable use by employing the switching-mode power supply method, which prevents heating caused by inverter noise and similar factors.

- Some images are used under license from Shutterstock.com.
- Other company names and product names in this document are the trademarks or registered trademarks of their respective companies.
- The product photographs and figures that are used in this catalog may vary somewhat from the actual products.

Note: Do not use this document to operate the Unit.

OMRON Corporation Industrial Automation Company

Kyoto, JAPAN

Contact : www.ia.omron.com

Regional Headquarters

OMRON EUROPE B.V.
Wegalaan 67-69, 2132 JD Hoofddorp
The Netherlands
Tel: (31) 2356-81-300 Fax: (31) 2356-81-388

OMRON ELECTRONICS LLC
2895 Greenspoint Parkway, Suite 200
Hoffman Estates, IL 60169 U.S.A.
Tel: (1) 847-843-7900 Fax: (1) 847-843-7787

OMRON ASIA PACIFIC PTE. LTD.
438B Alexandra Road, #08-01/02 Alexandra
Technopark, Singapore 119968
Tel: (65) 6835-3011 Fax: (65) 6835-2711

OMRON (CHINA) CO., LTD.
Room 2211, Bank of China Tower,
200 Yin Cheng Zhong Road,
PuDong New Area, Shanghai, 200120, China
Tel: (86) 21-5037-2222 Fax: (86) 21-5037-2200

Authorized Distributor:

©OMRON Corporation 2022 All Rights Reserved.
In the interest of product improvement,
specifications are subject to change without notice.

Cat. No. Y253-E1-02 1222(1022)