

Industrial Handheld DPM Reader  
V460-H

**OMRON**

# An Intelligent Barcode Reader for Direct Part Marks and Labels





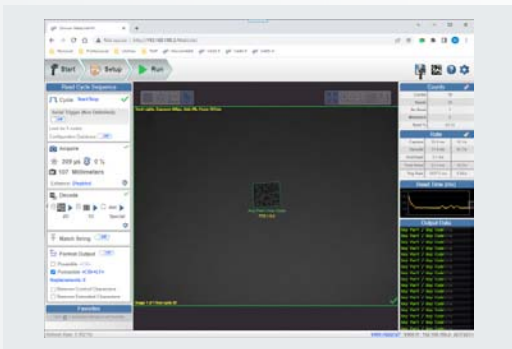
**An intuitive out-of-box reading experience, as well as seamless PLC connectivity. Its durable and long-lasting body ensures reliable performance in industrial environments.**

- All in one rugged industrial handheld barcode reader
- Reliably reads while automatically adjusting for barcodes of different sizes, types, surfaces or distances
- Simple PLC connection and integration with pre-built function blocks
- Hands Free Intelligent Presentation Mode



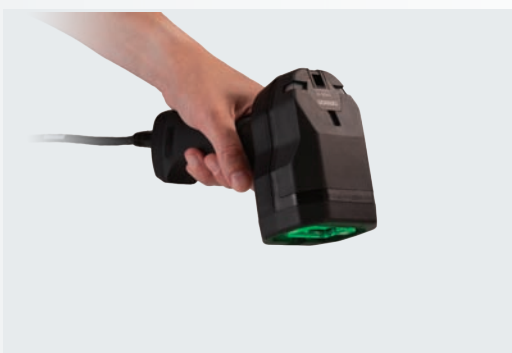
## Performance

|   |      |
|---|------|
| A barcode reader that adjusts for variations in barcode size, type and distance ..... | P. 4 |
| “Auto-Everything”:<br>Just click and read .....                                       | P. 5 |
| Reliable reading of direct part marks — every time .....                              | P. 6 |
| Experience the advanced rugged design for uninterrupted performance .....             | P. 7 |



## Plug & Play

|   |      |
|---|------|
| The game-changing technologies behind the V460’s “Auto-everything” .....                    | P.8  |
| Quick integration and easy PLC setup with built-in Ethernet & fieldbus communications ..... | P.9  |
| Easy Setup and no software to install with Weblink HH, Web browser based setup .....        | P.10 |



## Applications

|                 |      |
|-----------------|------|
| Automotive      |      |
| Aerospace       |      |
| Life Science    |      |
| Logistics ..... | P.11 |



## Handheld Barcode Reader Lineup

|  |      |
|--|------|
| Full line of Handheld barcode readers to complete your traceability solution ..... | P.12 |
|--|------|

# A barcode reader that automatically adjusts for variations in size, type, and distance

In industry, having a mixture of both low-contrast Direct Part Marks and high-contrast printed barcodes is common. With the V460, there's no need to purchase multiple units for different size barcodes, surfaces or types, as the reader automatically adjusts to decode the direct part mark or label presented. It's never been easier to improve your traceability solution.



## Predictive Autofocus & Intelligent Lighting for Labels

Example 1



Automatically adjusts focus for labels at different distances.

Example 2



Automatic lighting adjustment to properly capture barcode Labels.

## Intelligent Lighting for Difficult Direct Part Marks

Example 1



Intelligent Lighting adjusts automatically for direct part marks on cylindrical or curved surfaces.

Example 2



Intelligent lighting corrects for Low contrast direct part marks on metallic surfaces.

# “Auto-Everything”: Just click and read

This intelligent handheld allows reading of a very broad range of challenging DPM codes and labels with variable code densities, sizes, part geometries, surface conditions and working distances without any user intervention or adjustment. A superior out-of-box reading experience in a wide variety of traceability applications.



## Intelligent Presentation Mode - Hands Free Operation

**Intelligent Presentation Mode** allows direct part marks and barcodes to be presented to the reader and it will automatically begin reading while adjusting for optimal settings without any user intervention.



# Reliable reading of direct part marks – every time

While Traceability requires 100% reading of every part marked, variations in barcode size, surface texture, and reflectivity can make reading direct part marks a significant challenge. The V460's game-changing technology, allows the handheld to tackle even the most difficult-to-read Direct Part Marks with ease!



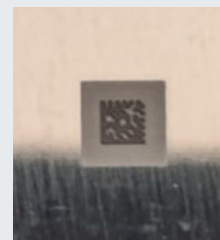
## V460H Can read even the most challenging part marks



Iron gear, with  
base processing  
Cell size: 0.127mm



Aluminum hairline  
processing,  
unclear, no  
base processing  
Cell size: 0.127mm



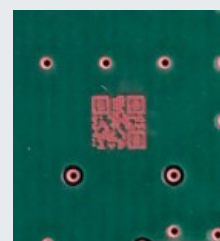
Aluminum buffing  
(mirror surface),  
with groundwork  
Cell size: 0.127mm



Aluminum casting,  
no base treatment  
Cell size: 0.127mm



Iron gear, with  
base processing  
Cell size: 0.127mm



Substrate, no  
base treatment  
with many high  
contrast pattern  
Cell size: 0.127mm

# Experience the advanced rugged design for uninterrupted performance

The V460 is a ruggedized handheld designed for long life in industrial situations. The barcode reader is built to withstand the harsh treatment of the manufacturing environment. Thanks to the V460's longevity, you can dramatically reduce the cost of repairing or replacing your barcode readers.

## Rugged design at a glance



### Extreme Durability



- **50 drops**  
to concrete from 6.6 feet/2 meters
- **3,000 tumbles**  
from a height of 3.3 feet/1 meter
- **Exceeds IEC 60068-2-31**



### Ingress Protection



- Protection against dust and water ingress
- **IP65-rated**



### Oil & Chemical Resistance



- Motor/engine oil, automatic transmission fluid (ATF), continuously variable transmission fluid (CVT), industrial degreaser (Engine Brite Heavy Duty), brake fluid (DOT4) per ISO 16750-5
- **ISO 16750-5 Compliant**

# The game-changing technologies behind the V460's "Auto-everything"

## Intelligent Lighting

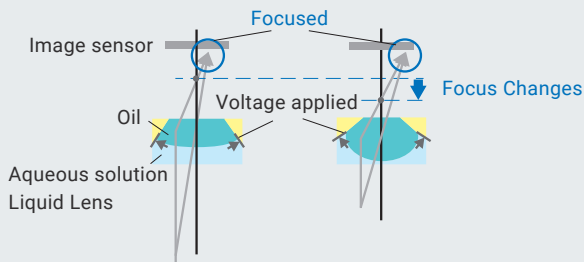
PATENT PENDING



Dome High-intensity Torch Low-Angle

Our intelligent lighting ensures that all Direct Part Marks can be read.

## Predictive Autofocus



Predictive autofocus automatically adjust for the distance the barcode reader is from the surface and makes reading various sizes of codes, simple.

The V460's incredible ability to automatically read a broad range of challenging direct part marks and printed labels without adjustment, is built upon three key technologies: predictive autofocus, X-Mode decoding algorithms, and intelligent lighting.



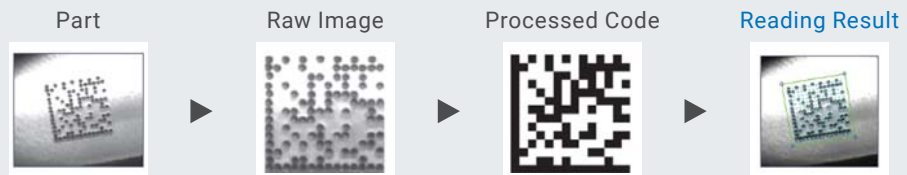
Dome lighting can be selected in several color options



## X-Mode Algorithms

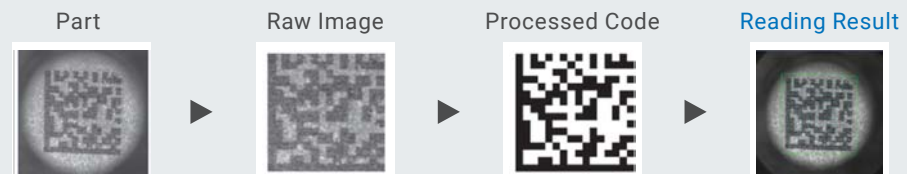
### Example 1

Dot Peen on Curved Surface



### Example 2

Laser Etch



X-Mode algorithms ensures that all Direct "Part Marks can be read as easily as a printed label.

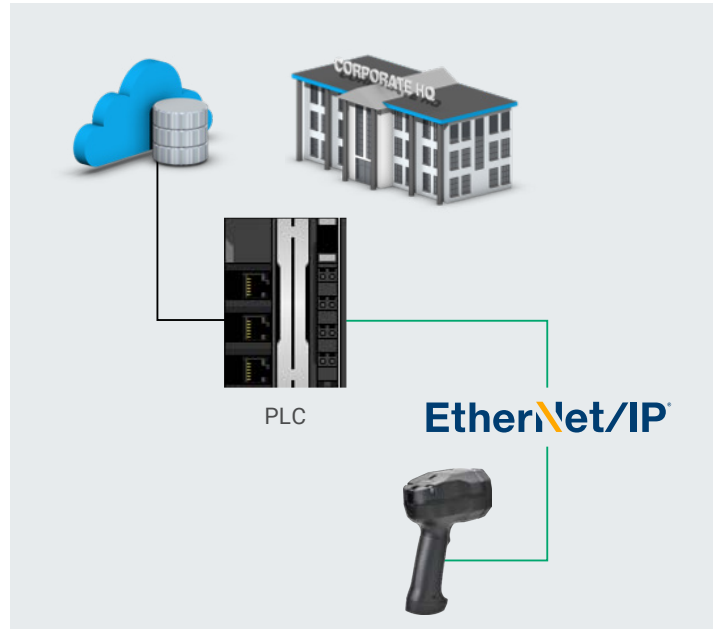


# Quick Connection and easy PLC setup

Save time and integration cost with V460's pre-built function blocks for the Ethernet & Fieldbus communications, eliminating the need for time consuming PLC communication setup and testing.

## Designed with PLC connection in mind

The V460 offers a built-in Power over Ethernet (PoE) port with fieldbus connectivity. A single Ethernet cable connection for power and communications, eliminating the cost and complexity of additional modules, while fieldbus connectivity simplifies the communication to the PLC.



### Ethernet & Fieldbus connectivity:

- EtherNet/IP™
- PROFINET
- TCP/IP
- FTP

## Time and cost savings with pre-built function blocks<sup>1</sup>

With pre-built Function Blocks Installed



Without pre-built Function Blocks Installed



1. Contact to your sales representatives to get the function blocks and manual

# OMRON Weblink



## Plug and Play

The V460 is entirely plug-and-play. Simply plug in the reader to view images and explore setting options in real time with live, high resolution images using a standard web browser.

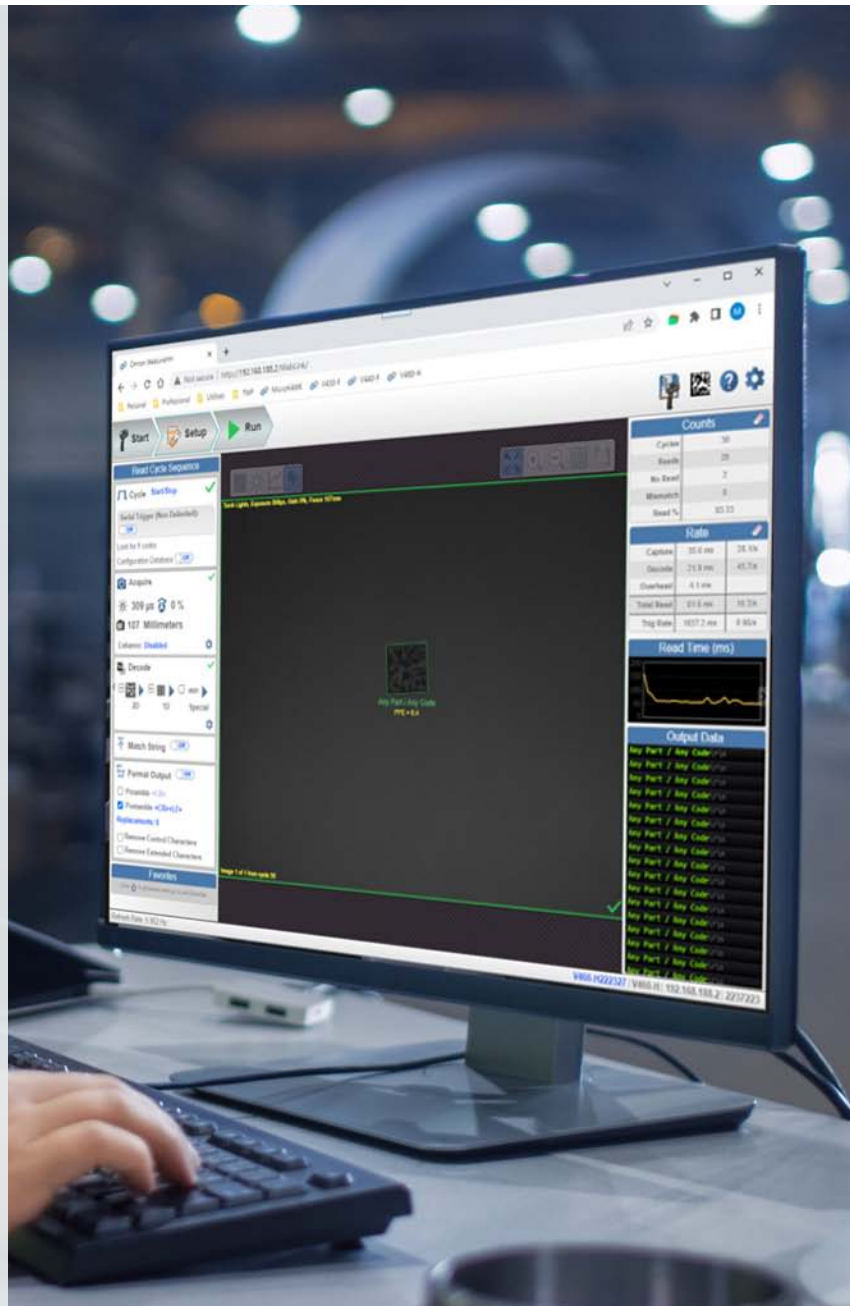


## WebLink HH Features:

- Web Browser Based Setup
- Supports standard browsers: Google Chrome®, Microsoft Edge®, Firefox®, Safari® etc.
- No Software to install or maintain
- Easy and intuitive setup
- Live image viewing
- Optional custom programming code creation



Try scanning this programming code and the V460 will be able to read the barcode on the front cover picture. See User Manual to check other programming codes.



# Applications

## Automotive



The V460 will automatically adjust for the varying contrasts of different surfaces for both 1D or 2D direct part marks and labels.

## Aerospace



Small direct part marks on turbine blades or other components are no problem for the V460's "Auto-everything" technology.

## Life Science



Direct Part Marks on highly reflective surfaces may be a challenge for some, but the V460's Intelligent Lighting and X-Mode algorithms make this as easy as point & click.

## Logistics



Different size barcodes at different distances are a snap with the V460's Predictive Autofocus, that's ready when you are.

# Handheld Barcode Reader Lineup

OMRON has a full lineup of handheld barcode readers as part of your ideal traceability solution.

|               |   |   |   |  |   |   |
|---------------|---|---|---|--|---|---|
|               |  |  |  |  |  |    |
|               | V410-SR   | V410-HC   | V410-XD   | V450-H   | V450-H  | V460-H  |
| Communication | RS-232 / USB  | RS-232 / USB  | RS-232 / USB  | RS-232 / USB   | Bluetooth<br>Wireless, Cradle:<br>RS-232 / USB                                      | <ul style="list-style-type: none"> <li>• Ethernet (POE)</li> <li>• EtherNet/IP™</li> <li>• PROFINET</li> <li>• TCP/IP</li> <li>• FTP</li> </ul> |
| Application   | Light Industrial<br>for Labels  | Health Care<br>Model, for Labels<br>(Disinfectant<br>Resistant)                   | Light industrial<br>for direct part<br>marks and<br>labels                        | Rugged<br>industrial for<br>direct part<br>marks and<br>labels                     | Rugged<br>industrial for<br>direct part<br>marks and<br>labels                      | Rugged Industrial<br>for the most<br>challenging direct<br>part marks and<br>labels   |
| Model         | V410-<br>HDS4608SR  | V410-<br>HDS4608HC  | V410-<br>HDS4608XD  | V450-<br>HDS3608-0001  | V450-<br>HDS3678-0001   | V460-H0PX   |





# Terms and Conditions Agreement

## **Read and understand this catalog.**

Please read and understand this catalog before purchasing the products. Please consult your OMRON representative if you have any questions or comments.

## **Warranties.**

- (a) Exclusive Warranty. Omron's exclusive warranty is that the Products will be free from defects in materials and workmanship for a period of twelve months from the date of sale by Omron (or such other period expressed in writing by Omron). Omron disclaims all other warranties, express or implied.
- (b) Limitations. OMRON MAKES NO WARRANTY OR REPRESENTATION, EXPRESS OR IMPLIED, ABOUT NON-INFRINGEMENT, MERCHANTABILITY OR FITNESS FOR A PARTICULAR PURPOSE OF THE PRODUCTS. BUYER ACKNOWLEDGES THAT IT ALONE HAS DETERMINED THAT THE PRODUCTS WILL SUITABLY MEET THE REQUIREMENTS OF THEIR INTENDED USE.

Omron further disclaims all warranties and responsibility of any type for claims or expenses based on infringement by the Products or otherwise of any intellectual property right. (c) Buyer Remedy. Omron's sole obligation hereunder shall be, at Omron's election, to (i) replace (in the form originally shipped with Buyer responsible for labor charges for removal or replacement thereof) the non-complying Product, (ii) repair the non-complying Product, or (iii) repay or credit Buyer an amount equal to the purchase price of the non-complying Product; provided that in no event shall Omron be responsible for warranty, repair, indemnity or any other claims or expenses regarding the Products unless Omron's analysis confirms that the Products were properly handled, stored, installed and maintained and not subject to contamination, abuse, misuse or inappropriate modification. Return of any Products by Buyer must be approved in writing by Omron before shipment. Omron Companies shall not be liable for the suitability or unsuitability or the results from the use of Products in combination with any electrical or electronic components, circuits, system assemblies or any other materials or substances or environments. Any advice, recommendations or information given orally or in writing, are not to be construed as an amendment or addition to the above warranty.

See <http://www.omron.com/global/> or contact your Omron representative for published information.

## **Limitation on Liability; Etc.**

OMRON COMPANIES SHALL NOT BE LIABLE FOR SPECIAL, INDIRECT, INCIDENTAL, OR CONSEQUENTIAL DAMAGES, LOSS OF PROFITS OR PRODUCTION OR COMMERCIAL LOSS IN ANY WAY CONNECTED WITH THE PRODUCTS, WHETHER SUCH CLAIM IS BASED IN CONTRACT, WARRANTY, NEGLIGENCE OR STRICT LIABILITY.

Further, in no event shall liability of Omron Companies exceed the individual price of the Product on which liability is asserted.

## **Suitability of Use.**

Omron Companies shall not be responsible for conformity with any standards, codes or regulations which apply to the combination of the Product in the Buyer's application or use of the Product. At Buyer's request, Omron will provide applicable third party certification documents identifying ratings and limitations of use which apply to the Product. This information by itself is not sufficient for a complete determination of the suitability of the Product in combination with the end product, machine, system, or other application or use. Buyer shall be solely responsible for determining appropriateness of the particular Product with respect to Buyer's application, product or system. Buyer shall take application responsibility in all cases.

NEVER USE THE PRODUCT FOR AN APPLICATION INVOLVING SERIOUS RISK TO LIFE OR PROPERTY OR IN LARGE QUANTITIES WITHOUT ENSURING THAT THE SYSTEM AS A WHOLE HAS BEEN DESIGNED TO ADDRESS THE RISKS, AND THAT THE OMRON PRODUCT(S) IS PROPERLY RATED AND INSTALLED FOR THE INTENDED USE WITHIN THE OVERALL EQUIPMENT OR SYSTEM.

## **Programmable Products.**

Omron Companies shall not be responsible for the user's programming of a programmable Product, or any consequence thereof.

## **Performance Data.**

Data presented in Omron Company websites, catalogs and other materials is provided as a guide for the user in determining suitability and does not constitute a warranty. It may represent the result of Omron's test conditions, and the user must correlate it to actual application requirements. Actual performance is subject to the Omron's Warranty and Limitations of Liability.

## **Change in Specifications.**

Product specifications and accessories may be changed at any time based on improvements and other reasons. It is our practice to change part numbers when published ratings or features are changed, or when significant construction changes are made. However, some specifications of the Product may be changed without any notice. When in doubt, special part numbers may be assigned to fix or establish key specifications for your application. Please consult with your Omron's representative at any time to confirm actual specifications of purchased Product.

## **Errors and Omissions.**

Information presented by Omron Companies has been checked and is believed to be accurate; however, no responsibility is assumed for clerical, typographical or proofreading errors or omissions.

**Note: Do not use this document to operate the Unit.**

**OMRON Corporation Industrial Automation Company**

**Kyoto, JAPAN**

**Contact : [www.ia.omron.com](http://www.ia.omron.com)**

**Regional Headquarters**

**OMRON EUROPE B.V.**

Wegalaan 67-69, 2132 JD Hoofddorp  
The Netherlands  
Tel: (31) 2356-81-300 Fax: (31) 2356-81-388

**OMRON ELECTRONICS LLC**

2895 Greenspoint Parkway, Suite 200  
Hoffman Estates, IL 60169 U.S.A.  
Tel: (1) 847-843-7900 Fax: (1) 847-843-7787

**OMRON ASIA PACIFIC PTE. LTD.**

438B Alexandra Road, #08-01/02 Alexandra  
Technopark, Singapore 119968  
Tel: (65) 6835-3011 Fax: (65) 6835-3011

**OMRON (CHINA) CO., LTD.**

Room 2211, Bank of China Tower,  
200 Yin Cheng Zhong Road,  
PuDong New Area, Shanghai, 200120, China  
Tel: (86) 21-6023-0333 Fax: (86) 21-5037-2388

**Authorized Distributor:**

©OMRON Corporation 2023 All Rights Reserved.  
In the interest of product improvement,  
specifications are subject to change without notice.

**Cat. No. Q353-E1-01** 1023 (1023)