

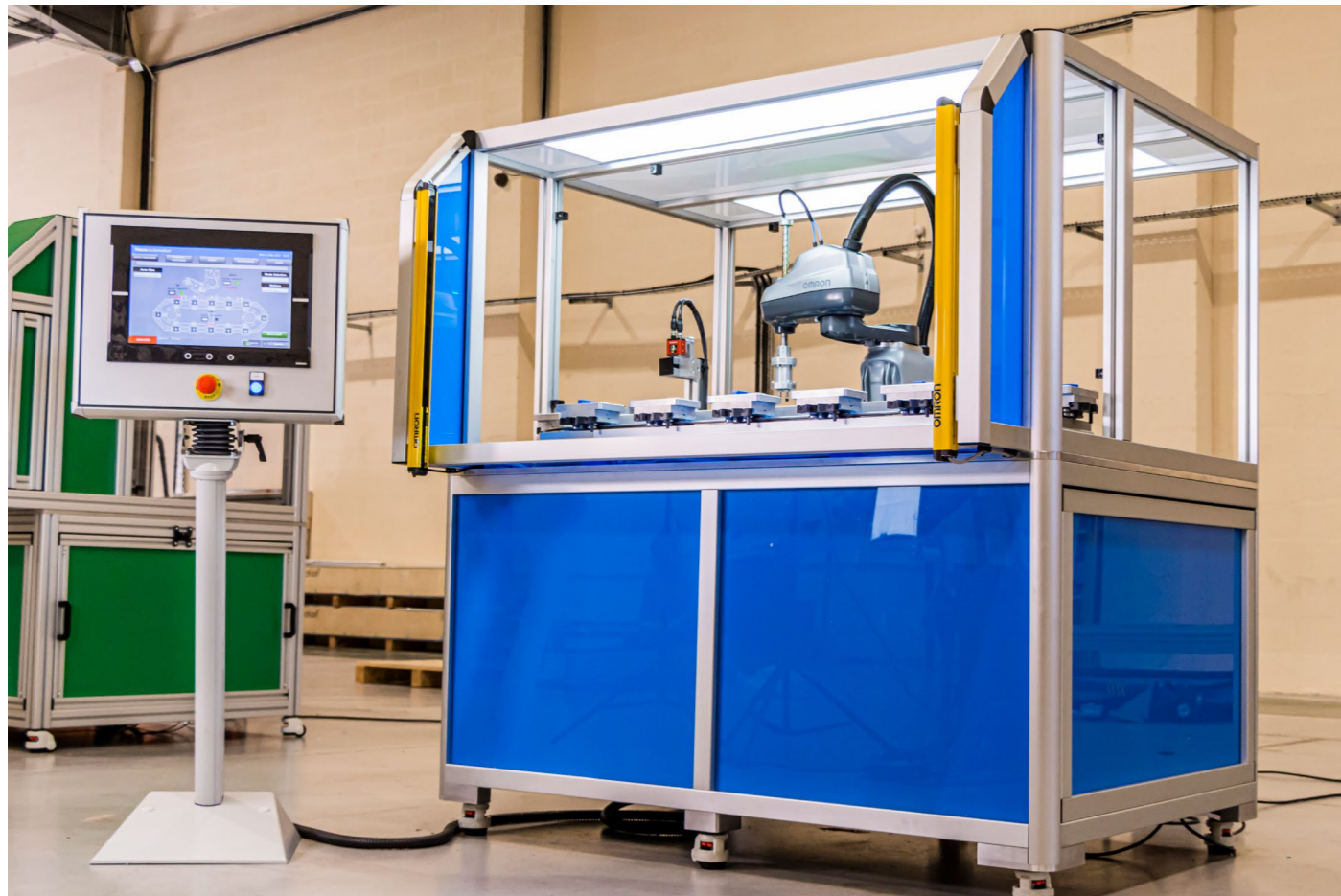
HepcoAutomation®

ADVANCED AUTOMATION SOLUTIONS



DTS Production Cell Systems

hepcoautomation.com

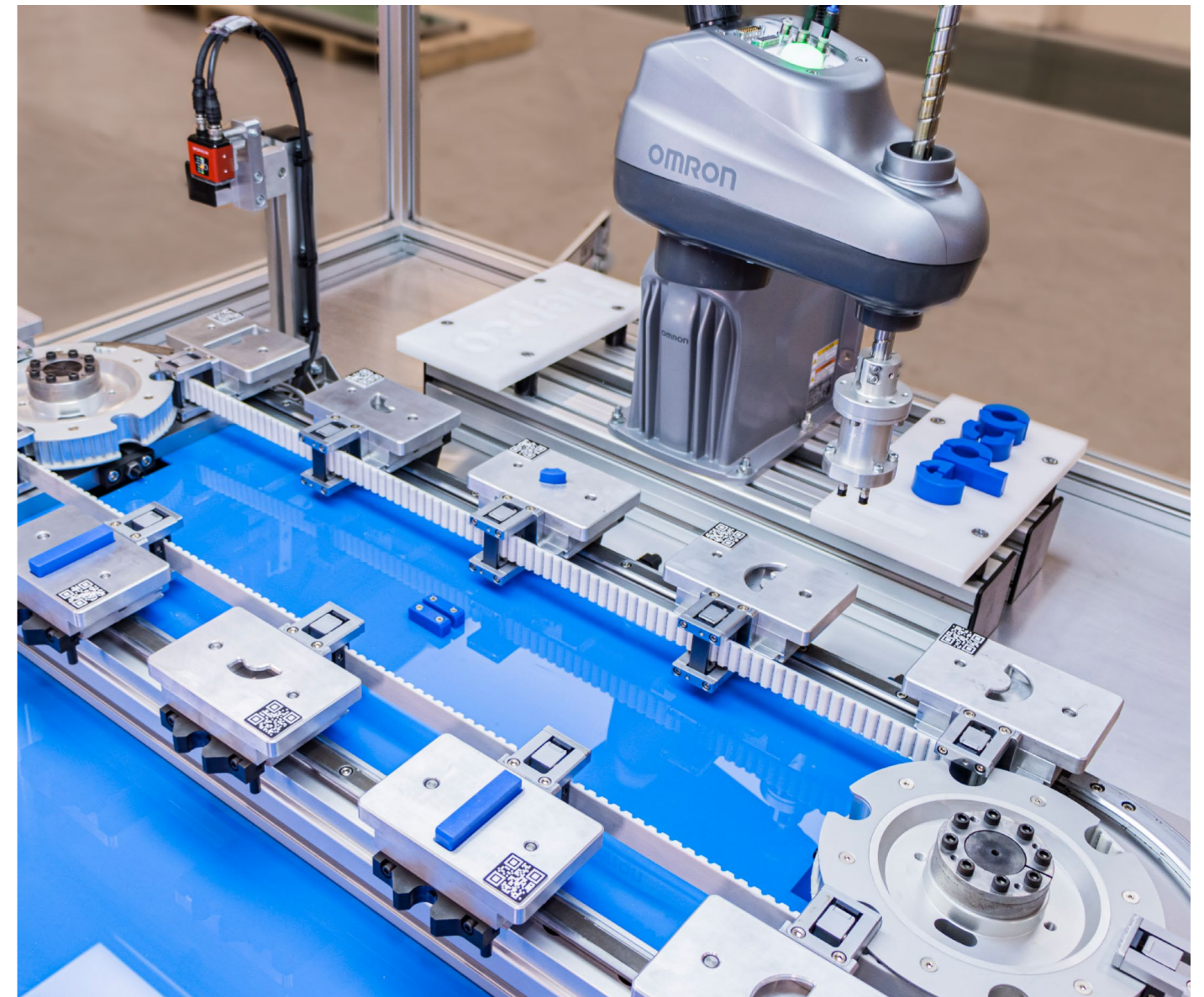


ABOUT HEPCOAUTOMATION

We provide solutions to move, assemble, and manipulate components throughout the production process.

Fully integrated automation systems can be supplied utilising the HepcoMotion range of linear and circular motion products, including mechanical design, robotic integration, machine software and drives & controls.

We are extremely customer focussed, working closely with our clients throughout the project, from concept to completion.



DTS PRODUCTION CELL SOLUTIONS

Each system is specified exactly your application, from a straight forward standalone DTS system with drives and controls ready for your own integration, right up to a fully functioning turnkey production cell.

High-performance gearboxes, servo drives and controls along with standard integrated software enable complete synchronisation with the DTS transfer process.

All aspects of the mechanical design, including machine base, frame and guarding are taken care of by the HepcoAutomation Team.

An installation and commissioning service is also available on request.

DTS

Precision transfer system moving products from station to station in an accurate, repeatable, and controlled manner.

GEARBOXES

Maximum precision and dynamics, combined with low backlash and exceptional torque density for any application or performance range.

HMI

The HMI can be programmed to achieve full system control of each axis, allowing changes of positional data, Acc/Dec values and system speeds. Additional recipes within the HMI enable the user to determine motion sequences and axis profiles via manual input of the required parameters.

SERVO DRIVES

High resolution precision motion control with multi-turn encoder, built-in safety network and improved loop control allowing accurate and higher machine speeds and productivity.

ROBOTICS

Articulated, SCARA, Delta and cobots be integrated to perform loading & unloading, pick & place, assembly, screw driving or dispensing functions.

VISION SYSTEMS

Designed for use in all types of object inspection, data reading, position/orientation and measurement operations, camera systems can be easily integrated into almost any machine or robot.

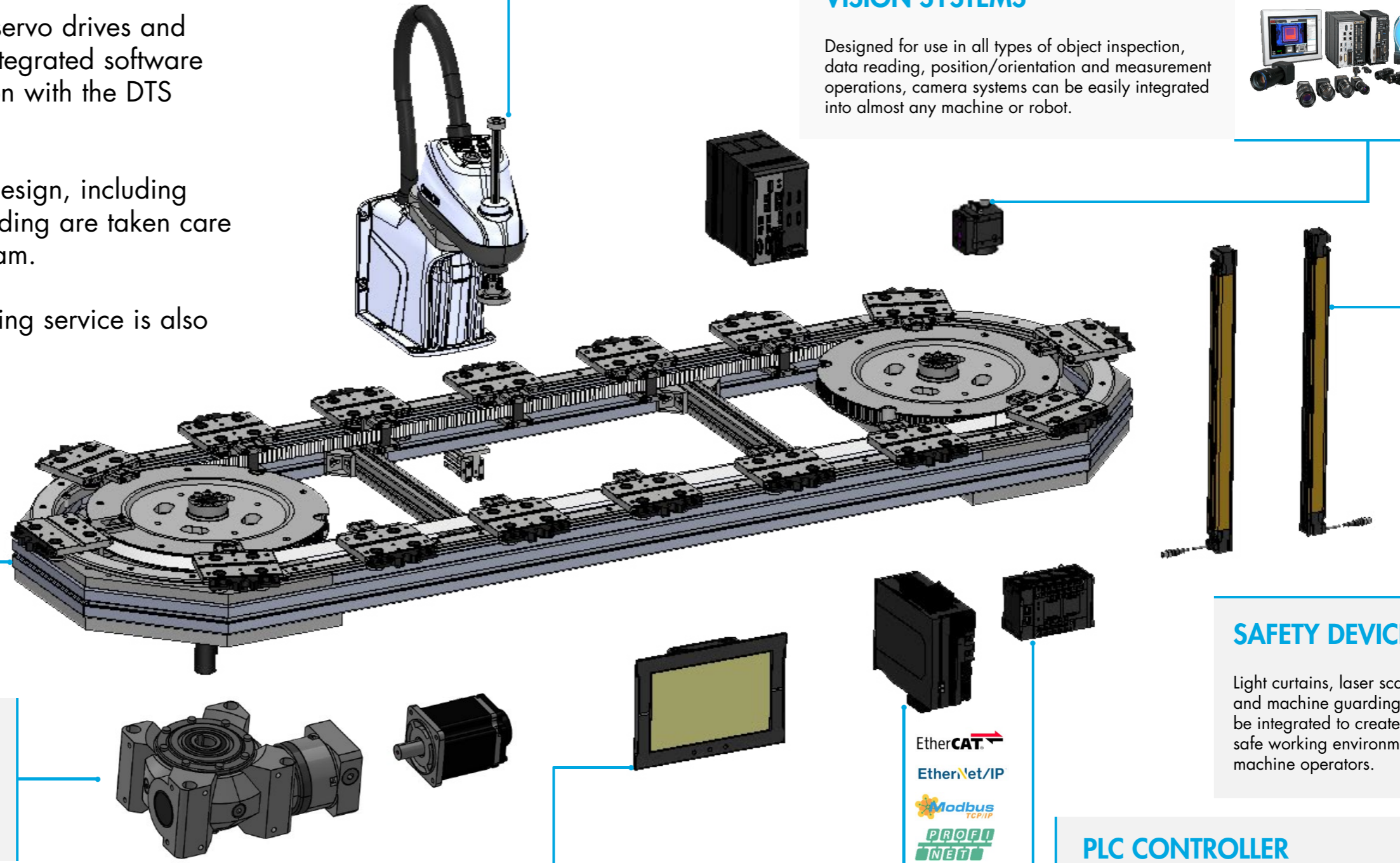


SAFETY DEVICES

Light curtains, laser scanners and machine guarding can be integrated to create a safe working environment for machine operators.

PLC CONTROLLER

Allowing synchronous control of all machine devices and advanced functionality such as motion, robotics and database connectivity. This multidisciplinary concept allows you to simplify solution architecture, reduce programming and optimize productivity.



DTS TECHNOLOGY FROM HEPACO

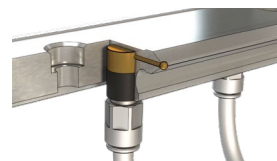
DTS transfer systems move products throughout the production process with smooth and accurate motion. Complex routing and disconnected processes can be contained within one single continuous loop, reducing process costs significantly.

Workstations can be integrated inside and outside of the track, thereby minimising the machine footprint and saving valuable floor space when compared to linear production lines.

Based on Hepco's renowned V Guide technology, carriages resist deflection and provide stability for operations to take place. A locking system also aligns carriages to a repeatable processing position of +/-0.05mm.

DTS systems are perfect for the transport of uniform batch sizes and light to medium loads in continuous or indexing operations across all industries.

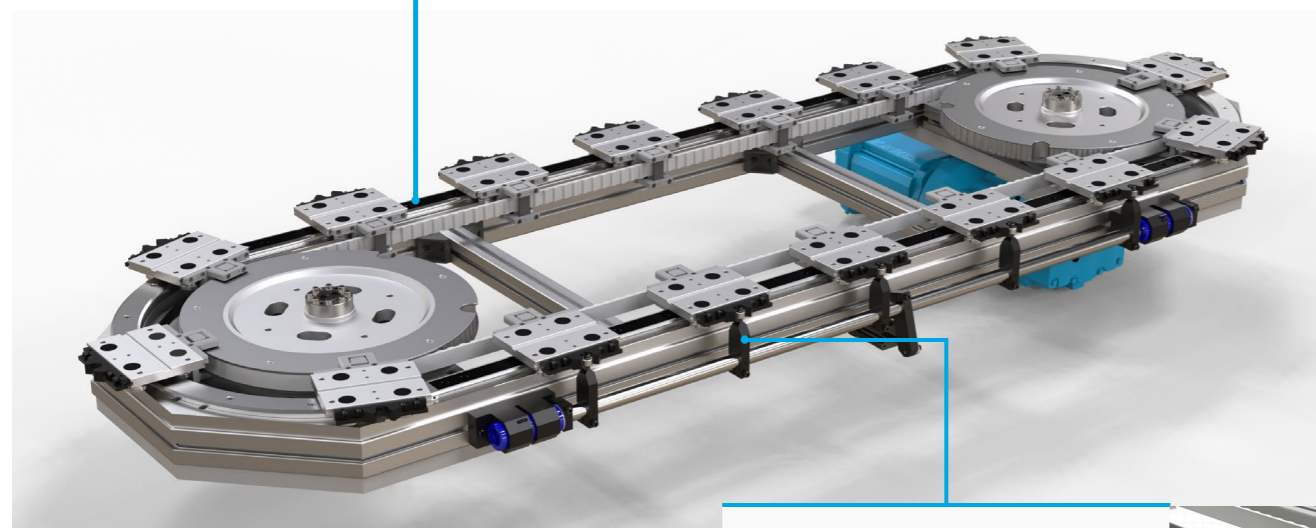
They are suitable for hostile environments, working well in dusty and dirty applications, and stainless steel-based systems are available for use in corrosive and wash-down scenarios.



Automated lubrication reduces machine downtime and maintenance.



V Guide geometry resists deflection and provides stability for operations to take place.



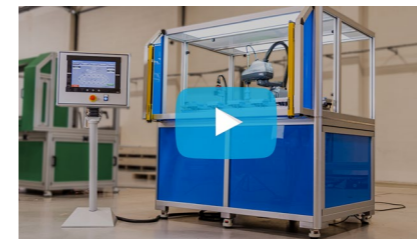
Locking system aligns carriages to a repeatable processing position of +/-0.05mm.



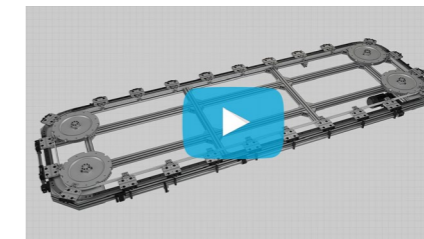
Oval square or rectangular configurations are available, depending on your requirements.

APPLICATION EXAMPLES & VIDEOS

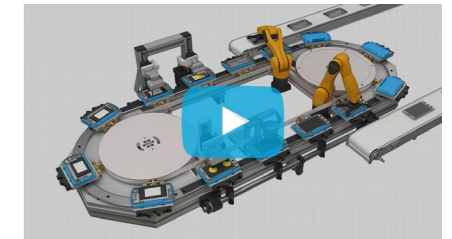
View our latest DTS applications and product videos by clicking on the thumbnails below.



HepcoAutomation DTS+ Robotics Cell



DTS+ Track System Explainer Video



PRT2 Track System Explainer Video



DTS Automotive Battery Assembly Application



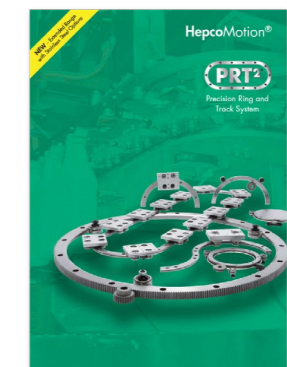
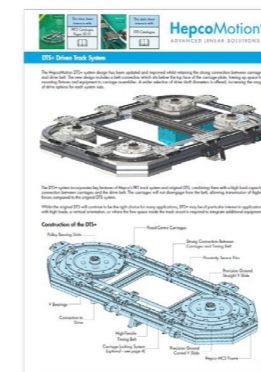
Guitar String Packaging Application



Face Mask Packaging Application

LITERATURE

View the DTS and related product catalogues and datasheets by clicking on the thumbnails below



CONTACT US TO DISCUSS YOUR APPLICATION

www.hepcoautomation.co.uk | +44 (0) 1952 585 004 | sales@hepcoautomation.co.uk

**Unit D5
Horton Park Industrial Estate
Horton Wood
Telford
TF1 7GX**

**Tel: +44 (0)1952 585004
E-mail: sales@hepcoautomation.com**

HepcoAuto 01 UK © 2023
Hepco Slide Systems Limited
All rights reserved by Hepco Slide Systems Limited, Tiverton, Devon EX16 6TG
Reproduction in whole or part without prior authorisation from Hepco is prohibited
HepcoAutomation® is the trading name of Hepco Slide Systems Limited